

Report of 1999-2005 National Year 10 Smoking Surveys

Prepared for ASH



by

Robert Scragg

School of Population Health,

University of Auckland

May 2006

Acknowledgements

Action on Smoking and Health (ASH) managed data collection of the annual national Year 10 smoking surveys analysed in this report. Research Solutions processed the data. The Ministry of Health provided funds to carry out the national Year 10 smoking surveys. Teachers and students from many NZ schools freely gave their time and information during data collection. The Health Sponsorship Council assisted with collection of 2004 data.

Summary

Objectives

1. Investigate trends in adolescent smoking prevalence during 1999-2005, and determine whether trends have been similar in all ethnic groups and in all District Health Board (DHB) regions
2. Investigate trends during the last 5 years (2001-2005) in parental smoking prevalence, and smoking in the home, which are both risk factors for adolescent smoking.

Methods

Annual national surveys of Year 10 students who answered an anonymous self-administered questionnaire during 1999-2005 (n=214,654).

Results

- Daily smoking prevalence continued to decline in 2005 in both girls (from 11.4% in 2004 to 10.7% in 2005) and boys (from 8.1% in 2004 to 7.2% in 2005). During 1999-2005 daily smoking declined more in boys (a 49% relative decrease from an absolute prevalence of 14.1% in 1999) than in girls (a 36% relative decrease from an absolute prevalence of 17.1% in 1999).
- Among girls, daily smoking prevalence continued to decline from 2004 to 2005 in Maori (from 29.1% to 26.5%) but changed little in Pacific, Asian and European; with the relative change during 1999-2005 being: Maori -26%, Pacific -37%, Asian -50% and European -43%. Among boys, daily smoking prevalence continued to decline from 2004 to 2005 in Maori and Pacific, changed little in European, and increased in Asian (from 3.8% to 5.3%); with the relative change during 1999-2005 being: Maori -40%, Pacific -37%, Asian -31%, and European -56%.
- Daily smoking prevalence decreased for the first time in 2005 among girls attending SES decile 1-2 schools, compared with previous years. Declines in daily smoking are now occurring in all SES deciles for both sexes, although the relative decline is greater in students attending high decile schools.
- The gap in the prevalence of never smoking widened during 2001-2005 between students from homes which do not allow inside smoking compared with those that do,

indicating that student smoking patterns are improving more for those living in homes that do not allow smoking inside.

- Prevalence of daily smoking has declined in all DHBs during 1999-2005.
- Prevalence of parental smoking remained unchanged during 2001 to 2005, aside from parents of students in Auckland DHB where there was a decline independent of changes in ethnic composition, and in Otago DHB where parental smoking has increased.
- Smoking in the home declined from 30.5% in 2001 to 26.5% in 2005 (13% relative decrease). However, the trend in the proportion of students living in smoky homes varied around the country, with the following DHBs showing no decline over this period: Northland, Bay of Plenty, Hawkes Bay, Wanganui, Mid-Central, Hutt Valley, Canterbury, South Canterbury, Otago and Southland.

Conclusions

Daily smoking prevalence continues to decline in both girls and boys. Student smoking patterns are improving more for those living in homes that do not allow smoking inside compared to those that live in smoky homes. However, the trend in the proportion of students living in smoky homes varies around the country. Increased health promotion strategies to discourage smoking homes, particularly in DHB regions where there has been no decline in the prevalence of smoky homes, may help to accelerate the decline in adolescent smoking.

Outline of Document

Data are reported from the national Year 10 surveys carried out during 1999-2005. The data analyses are in two sections:

- Trends in student smoking prevalence during 1999-2005, comparing changes over the 7 years, by sex, ethnicity, and district health board region.
- Trends in parental smoking prevalence (and smoking in the home) during the last 5 years (2001-2005).

The focus of this report is on daily smoking, \geq monthly smoking (ie. daily + weekly + monthly), and 'never smoked', as these 3 groups represent either the majority of heavy student smokers or those who have never taken up smoking, and give a better picture of trends. The group who smoked less than monthly (described as 'less often' in the tables) has very similar smoking behaviour to that described as 'previous smokers'; hence, these groups are only given limited attention in this report.

Statistical Methods

The data analyses in this report were carried out using SAS (Version 9.1). This software currently does not allow for calculation of adjusted relative risks corrected for design effects arising from clustered sampling by school when analysing categorical outcomes. If present, the design effect will result in under-estimation of standard errors, so that some false positive significant differences between comparison groups may sometimes have occurred. Evaluation of the design effect using EpiInfo showed that the design effect had a minimal effect on the size of standard errors, partly because of the large sample size.

Relative or percentage changes (usually from 1999) in smoking behaviour were calculated using Mantel-Haenszel relative risks adjusted for confounders. These were calculated by multiplying the relative risk by 100 and then subtracting 100 (eg. a relative risk of 1.20 = a percentage change of 20%; a relative risk of 0.80 = a percentage change of -20%). These values facilitate comparisons in changes over time between subgroups (eg. sex, ethnicity or region). However, 95% confidence intervals for percentage change may not always be symmetrical (around the percentage change) because of their derivation from relative risks, which are constrained at the lower limit by 0.

Change in student smoking question in 2004 & 2005 surveys

The order of responses to the question asking “How often do you **now** smoke?”, after the response to “Never”, was reversed in 2004 and 2005 so that it started with lowest frequency of smoking, compared with earlier surveys which started with daily smoking (Boxes 1 & 2). This change was made because the definition of the age that students first started smoking was tightened to specify smoking monthly in order to separate experimentation from regular monthly smoking. Changing the order in 2004 and 2005 allowed students who currently smoked less than monthly to skip this question. For all surveys, students answering “No” to Q5 were classified as *never* smokers, and students answering “Never” to Q6 were classified as *previous* smokers.

Box 1: questions on student cigarette smoking in 1999 – 2003 surveys

Q5 Have you ever smoked a cigarette, even just a few puffs?

1 ☐ Yes

2 ☐ No → → → → NOW GO TO Q12 – TURN OVER PAGE

Q6 How often do you now smoke? (PLEASE TICK ONE ANSWER ONLY)

1 ☐ Never → → → → → → → → → → → → → → → → NOW GO TO Q11 – TURN OVER PAGE

2 ☐ At least once a day

3 ☐ At least once a week

4 ☐ At least once a month

5 ☐ Less often

Q7 At what age did you first start smoking? *

WRITE IN THE AGE IN YEARS HERE _____ YEARS

* Asked in 2003 survey only

Box 2: questions on student cigarette smoking in 2004-2005 surveys

Q5 Have you ever smoked a cigarette, even just a few puffs?

1 ☐ Yes

2 ☐ No → → → → NOW GO TO QXX*

Q6 How often do you now smoke? (PLEASE TICK ONE ANSWER ONLY)

1 ☐ Never → → → → → → → → → → → → → → → → NOW GO TO QXX*

2 ☐ Less often than once a month → → → → → → → NOW GO TO Q8

3 ☐ At least once a month

4 ☐ At least once a week

5 ☐ At least once a day

Q7 At what age did you first start smoking monthly?

WRITE IN THE AGE IN YEARS HERE _____ YEARS

* Number of question varies with calendar year

Student Smoking Trends: 1999-2005

Sample Size by Year (Table 1)

Table 1 shows the annual number of questionnaires available for analysis, during 1999-2005. The number of students aged 14 and 15 years returning questionnaires in 2005 was 33,219, about 800 more than in 2004; and although over 400 less than the previous highest number of 33,661 in 2003, the number available for analyses in 2005 (n=32,761) was only slightly smaller than the number in 2003 (n=32,927) because of fewer students with missing information on ethnicity and smoking status in 2005. After excluding questionnaires with missing information on sex, ethnicity and cigarette smoking status, information from 214,654 students was available for analyses covering the 7 year period of 1999-2005. In ethnic comparisons, 'Other' students have been combined with European.

Trends by Sex (Tables 2a, 2b & 3, Figures 1 & 2)

Smoking prevalences have progressively declined in New Zealand Year 10 boys and girls during 1999 to 2005 (Table 2a). Table 2b compares trends in smoking categories by sex. In girls, daily, weekly, monthly and \geq monthly smoking significantly decreased from 1999 to 2005, after adjusting for age and ethnicity. Along with this change, the proportion of female students who have never smoked continued to increase from 44.3% in 2004 to 46.6% in 2005, much higher than 29.9% in 1999. A similar pattern was seen in boys, among whom daily smoking continued to decrease from 8.1% in 2004 down to 7.2% in 2005, much lower than 14.1% in 1999; while the proportion who never smoked continued to increase from 49.9% in 2004 to 52.5% in 2005, both much higher than 33.3% in 1999.

The data in Table 2b indicate that the decrease in daily smoking prevalence for 2004-2005, compared with previous years, is not due to the changed order of responses to Q6 in 2004 and 2005, when students may have been less likely to tick the box for "At least once a day" because it was asked last (see Boxes 1 & 2). If this had happened, the prevalence of smoking "Less often" than once a month should have increased consistently in 2004 and 2005 for both boys and girls, when it was asked first (after "Never"), compared with 2003. However, the prevalence of smoking "Less often" than once a month was lower in 2004 and 2005 compared with 2003 (girls: 8.9% in 2004 and 8.7% in 2005 compared to 11.1% in 2003; boys: 6.5% in 2004 and 6.6% in 2005

compared to 9.0% in 2003). Thus, the changed order of responses to Q6 is unlikely to explain the decreased daily smoking prevalence in 2004 and 2005 compared with previous years, since percentages were lower in these two years for all smoking frequencies – daily, weekly, monthly and less often (Table 2). Further, the prevalence of never smoking, calculated using Question 5 which has remained unchanged from 1999 to 2005, continued to increase during 2004 and 2005 compared with 2003 (girls: 44.3% in 2004 and 46.6% in 2005 compared to 39.1% in 2003; boys: 49.9% in 2004 and 52.5% in 2005 compared to 46.0% in 2003). This provides additional confirmation that the smoking prevalence continued to decline throughout 2004 and 2005 compared with previous years in both girls and boys.

Table 3 reports percentage changes in prevalence of daily, total \geq monthly and never smoking for 2000-2005 compared with 1999, for both sexes together, and also by sex, adjusting for age and ethnicity. Daily smoking has declined by 42% and never smoking increased by 54% for girls and boys combined. The 49% decline in daily smoking prevalence by boys (95% CI: -53%, -45%) was significantly greater than the 36% decline by girls (95% CI: -40%, -33%) since their confidence intervals do not overlap. The increase in the prevalence of never smoking from 1999 to 2005 was similar in girls and boys (53% and 56%, respectively). These trends are shown graphically in Figures 1 and 2. Overall these results indicate that daily smoking prevalences are declining in both female and male students, but more so in the latter; while the relative increase in the prevalence of never smoking has been the same for both sexes.

Trends by Ethnicity (Tables 4a-7, & Figures 3-10)

Tables 4a-5b show absolute levels and percentage changes, compared to 1999, in smoking behaviour by ethnic group from 1999 to 2005. Figures 3-10 show relative risks for each of the last 6 years, compared with 1999 (=1.0), adjusted for age.

- Maori girls: the decline in daily smoking prevalence that occurred for the first time in 2004, after 5 years of no change in daily smoking prevalence from 1999 to 2003, has continued in 2005 (from 34.2% in 2003 to 29.1% in 2004 and 26.5% in 2005), so that the relative decline in daily smoking from 1999 to 2005 is 26% ($p < 0.001$). The prevalence of smoking monthly or more often fell slightly in 2005 (41.2%) compared with 2004 (42.2%), and is now 18% relatively lower in 2005 compared with 1999. The proportion of never smokers in 2005 (18.1%) changed little from 2004 (18.0%),

although the relative increase in never smoking from 1999 has risen to 44% in 2005. Long-term trend suggests decline in daily smoking prevalence is continuing, but remains much smaller than that occurring in other sex-ethnic subgroups.

- Pacific girls: their overall smoking pattern is little changed from 2004, with the daily smoking prevalence slightly higher in 2005 (14.5%) compared to 2004 (13.2%), and prevalence of never smoking similar in 2005 (37.4%) compared to 2004 (37.1%). However, cumulatively from 1999 to 2005, there has been a 37% relative decline ($p<0.001$) in daily smoking, a 23% relative decline ($p<0.001$) in \geq monthly smoking from 33.3% to 25.5%, and a 19% relative increase in never smoking from 31.2% to 37.4%. Data indicate a significant decline in prevalence of regular smokers, and an increase in prevalence of never smokers, from 1999 to 2005, but the lack of change in smoking patterns between 2004 and 2005 requires monitoring in future surveys to determine whether previous trends have levelled out.
- Asian girls: their overall smoking pattern is little changed from 2004, with daily smoking prevalence being similar in 2005 (2.9%) compared to 2004 (2.9%), and prevalence of never smoking being similar in 2005 (76.4%) compared to 2004 (75.5%). Asian girls have the highest absolute non-smoking prevalence of all sex-ethnic subgroups and their future patterns require monitoring for any increase in smoking prevalence that could arise due to acculturation from living in New Zealand.
- European girls: their smoking prevalence is little changed from 2004, with daily smoking prevalence being similar in 2005 (7.3%) compared to 2004 (7.2%), although the prevalence of never smoking increased in 2005 (50.9%) compared to 2004 (48.2%), so that the relative increase in never smokers from 1999 to 2005 is now 65%. Further monitoring should determine whether daily smoking prevalence continues to decline or has levelled out.
- Maori boys: their overall smoking pattern in 2005 continued to improve from 2004, with declines in both daily smoking (from 16.2% in 2004 to 14.0% in 2005) and \geq monthly smoking (from 24.4% in 2004 to 21.3% in 2005), along with a continuing rise in the proportion of never smokers (from 32.3% in 2004 to 34.6% in 2005). Since 1999, they have had a 40% relative decline in daily smoking and 60% relative increase in never smoking. Overall, their smoking pattern continues to improve.

- Pacific boys: their overall smoking pattern in 2005 continued to improve slightly from 2004, with small declines in both daily smoking (from 11.8% in 2004 to 10.2% in 2005) and \geq monthly smoking (from 17.7% in 2004 to 16.3% in 2005), along with a small rise in the proportion of never smokers (from 44.0% in 2004 to 45.1% in 2005). Since 1999, they have had a 37% relative decline in daily smoking and 23% relative increase in never smoking. Overall, their smoking pattern continues to improve.
- Asian boys: their overall smoking pattern was worse in 2005 compared to 2004, with small absolute increases in both daily smoking (from 3.8% in 2004 to 5.3% in 2005) and \geq monthly smoking (from 6.9% in 2004 to 8.2% in 2005), along with a decline in the proportion of never smokers (from 75.1% in 2004 to 72.0% in 2005). The long term trend for 1999-2005 shows an increase in never smoking, along with a decreasing trend in daily smoking (Figure 9). Further monitoring should determine whether this long term trend is continuing or becoming reversed due to acculturation from living in New Zealand.
- European boys: their smoking prevalence is little changed from 2004, with daily smoking prevalence being similar in 2005 (5.9%) compared to 2004 (5.4%), although the prevalence of never smoking increased in 2005 (55.1%) compared to 2004 (51.9%), so that the relative increase in never smokers from 1999 to 2005 is now 67%. Further monitoring should determine whether daily smoking prevalence continues to decline or has levelled out.

Table 6 reports annual relative risks of daily smoking for Maori, Pacific and Asian students compared with European/other during the period 1999-2005. The relative risk of daily smoking among Maori (female and male) and male Pacific students, compared with European, decreased slightly in 2005 compared with 2004 because of larger absolute and relative decreases in daily smoking among the former. In contrast, the gap between female Pacific and European students increased slightly (from a relative risk of 1.83 in 2004 to 1.98 in 2005) because of the small increase in prevalence of daily smoking among Pacific girls in 2005 (Table 4a); while the gap between male Asian and European students decreased (from a relative risk of 0.63 in 2004 to 0.98 in 2005) because the increased daily smoking prevalence among Asian boys in 2005 (Table 4b). The gap between female Asian and European students remained unchanged during 2004 and 2005. Overall, these comparisons suggest that the gap in daily smoking prevalence between Maori and male Pacific students, compared with European, finally may be decreasing although further monitoring is required to see if this trend continues.

Table 7 shows combined 2004-2005 prevalence data for individual Pacific and Asian ethnic groups. Among female Pacific students, daily smoking prevalence was highest among Cook Island students (24.8%), intermediate in Tongan (15.8%), followed by Niuean (11.6%) and Other Pacific (10.6%), and lowest in Samoan (9.6%). The pattern was similar among male Pacific students, with daily smoking prevalence being higher among Cook Island (15.0%), Tongan (13.1%) and Niuean students (14.5%), compared with Samoan (8.4%) and Other Pacific (7.7%). Among Asian students, there was a consistent pattern in boys and girls with the daily smoking prevalence being highest in Indian students, intermediate in Chinese, and lowest in Other Asian.

Trends by School SES Decile (Tables 8a – 9b)

Students were categorised by the Ministry of Education school socio-economic (SES) decile. Overall, school SES decile was inversely related to the percentage decline in daily smoking and increase in never smoking. In 2005, for the first time, the prevalence of daily smoking in girls declined significantly compared with 1999 (22.1% versus 28.1%, $p < 0.05$), while the prevalence of never smoking continued to increase (from 25.3% in 2004 to 30.2% in 2005). These results suggest that declines in smoking prevalence are now occurring in all SES deciles for both sexes, but further monitoring is required to confirm this trend.

Trends by Parental Smoking & Smoking in the Home (Tables 10 & 11)

Information from students on parental smoking and smoking in the home was available for 2001-2005. Student smoking prevalences were highest among those with both parents being smokers, intermediate for those with one parent being a smoker, and lowest if neither parent smokes (Table 10). Comparing the trend for students exposed to the extremes of parental smoking (both parents smoke versus neither smokes), during this 5-year period the absolute prevalence of daily smoking declined more in students with both parents smoking (-6.5%) compared to those with neither (-2.9%). In contrast, the relative decline was greater in students with neither parent smoking (-40%) compared to those with neither (-21%). The pattern was reversed for never smoking, with greater absolute increases from 1999 to 2005 in students with neither parent smoking (15.2%) compared to students with both parents smoking (7.2%). However, the absolute difference in never smoking between students with neither parent smoking compared with both parents smoking increased from 26.1% in 2001 to 34.1% in 2005, so that the gap in the prevalence of never smoking widened between these two parental

smoking groups. Overall, the data indicate that student smoking patterns are improving more for those with neither parent a smoker. Further monitoring is required to see if this trend persists.

Trends in student smoking also were examined by whether-or-not smoking was allowed in the home for the years 2001-2005 (Table 11). Smoking prevalences did not change from 2004 to 2005 for students living in homes with smoking. In contrast, among students living in homes which did not allow smoking inside, there was a small decrease in the prevalence of daily smoking (from 6.6% in 2004 to 5.7% in 2005), and an increase in the prevalence of never smoking (from 53.0% in 2004 to 55.9% in 2005). The absolute difference in never smoking between students in homes which did not allow inside smoking and those that did increased from 17.7% in 2001 to 24.5% in 2005, so that the gap in the prevalence of never smoking widened between these two groups. Overall, the data indicate that student smoking patterns are improving more for those living in homes that do not allow smoking inside. However, further monitoring is required to see if this trend persists.

Trends by District Health Boards (Tables 12a-12f, 13, & Figures 11-31)

Annual absolute prevalences of daily smoking, smoking monthly or more often, and never smoking, for each of the 21 District Health Boards (DHBs), are shown in Tables 12a-12f. Figures 11-31 show relative risks of daily smoking and never smoking, during 2000-2005, compared with 1999. DHB boundaries changed slightly in 2004, and prevalences for smoking behaviour have been re-calculated for all years in affected DHBs (Waikato and Wanganui).

The summary results of trends in daily smoking, smoking monthly or more often, and never smoking, are shown in Table 13. During 1999-2005 the prevalence of daily smoking declined in all DHBs, including South Canterbury (which had not declined up to 2004). Taranaki DHB, although not showing a significantly lower daily smoking prevalence in 2005 (9.8%) compared with 1999 (12.3%), showed a decline in daily smoking prevalence when comparing the average for 2001-02 (13.1%) with the average for 2004-05 (8.5%). From 1999 to 2005, total smoking prevalence (monthly or more often) has declined, and never smoking has increased, in all DHBs. Further monitoring is required to confirm the trends in daily smoking prevalence in some DHBs with smaller populations.

Parental Smoking Trends: 2001-2005

Parental smoking and smoking in the home are independent risk factors for daily smoking, while smoking in the home is also related to parental smoking [1]. Trends in these two risk factors for adolescent smoking were examined for the years that data are available: 2001-2005.

Trends by Ethnicity (Table 14)

In the total sample, there was no variation in the prevalence of parental smoking (by one or both parents) during 2001 to 2005. In contrast, smoking in the home declined by an absolute 4.0% from 2001 to 2005 (30.5% to 26.5%), which was a relative 13% decline adjusting for age, sex and ethnicity. The same pattern – of no consistent change in parental smoking, but a decline in smoking in the home – occurred in all ethnic groups except for Asian students where there was no change in the prevalence of smoking in the home.

Trends by School SES Decile (Table 15)

A similar pattern (as above) occurred across all school SES deciles, with little or no change in parental smoking prevalence, and a decline in smoking in the home, from 2001 to 2005.

Trends by District Health Boards (Tables 16a–16e, 17)

The trends in parental smoking and smoking in the home, by DHB, need to be interpreted with caution (Tables 16a-16e). The small number of students in some DHBs has resulted in much greater variation in the trends for these two risk factors of student smoking. Trends during 2001-05 are summarised in Table 17.

The prevalence of parental smoking has remained unchanged in all DHBs, aside from in Auckland where it has declined from 37.0% in 2001 to 30.3% in 2005 (Table 16a), in Canterbury where it was significantly higher in 2005 (36.5%) than in 2001 (33.4%) although the average for 2001-02 (33.5%) is very similar to the average for 2004-05 (32.4%), and in Otago where there has been a consistently higher prevalence of parental smoking during 2003-05 compared with 2001 (Table 16d). The decline in parental smoking in Auckland DHB during 2001-05 is partly explained by the increasing proportion of Asian students (whose parents are less likely to smoke) in this DHB from 18.0% in 2001 to 27.4% in 2005, but is also due to a real decline in parental smoking which has occurred in parents of European students (from 29.9% in 2001 to 25.2% in 2005).

The proportion of student homes which allow smoking declined during 2001-2005 in most DHBs except for Northland, Bay of Plenty, Hawkes Bay, Wanganui, Mid-Central, Hutt Valley, South Canterbury, Otago and Southland. Canterbury DHB is also in this category since the average for 2001-02 (23.5%) is similar to the average for 2004-05 (24.1%); while the smaller numbers in West Coast DHB may have masked a significant decline over this period given that the average for 2001-02 (39.3%) was higher than the average for 2004-05 (32.5%). Further monitoring is required to determine the long term trend within individual DHBs.

Reference

1. Scragg R, Laugesen M, Robinson E. Parental smoking and related behaviours influence adolescent smoking: results from the 2001 New Zealand national survey of 4th form students. *NZ Med J* 2003 (12 Dec); 116: U1187.

Table 1: Number of Year 10 students aged 14 and 15 years included in data analyses, after exclusions for missing information, by year of survey (1999-2005).

Questionnaire information	1999	2000	2001	2002	2003	2004	2005	All Years
Questionnaires returned	30,075	30,765	30,120	30,096	33,661	32,399	33,219	220,335
Missing information on:								
Sex	74	93	91	90	95	83	87	613
Ethnicity	593	886	288	414	353	204	152	2890
Cigarette smoking	376	456	343	307	286	191	219	2178
Questionnaires analysed	29,032	29,330	29,398	29,285	32,927	31,921	32,761	214,654

Table 2a: Distribution of Year 10 students by smoking cigarette smoking category, during 1999-2005, female and male combined.

Smoking Category	1999	2000	2001	2002	2003	2004	2005
	%	%	%	%	%	%	%
<i>Smoker</i>							
Daily	15.6	15.2	13.5***	12.4***	12.1***	9.8***	9.0***
Weekly	6.7	6.3	5.7***	4.7***	4.3***	4.0***	3.6***
Monthly	6.3	6.4	5.6**	4.9***	4.3***	3.8***	4.1***
Less often	14.3	13.6**	14.8	11.2***	10.1***	7.7***	7.7***
Total \geq monthly	28.6	27.9	24.8***	22.1***	20.7***	17.6***	16.8***
<i>Non-smoker</i>							
Previous	25.5	25.5	24.5**	28.3***	26.8***	27.7***	26.1*
Never smoked	31.6	33.0***	35.9***	38.4***	42.5***	47.0***	49.4***
(n)	(29,032)	(29,330)	(29,398)	(29,285)	(32,927)	(31,921)	(32,761)

* $p < 0.05$, ** $p < 0.01$, *** $p < 0.001$, compared with 1999, adjusted for sex, age & ethnicity

Table 2b: Distribution of Year 10 students by smoking cigarette smoking category, during 1999-2005, by *sex*.

Smoking Category	1999	2000	2001	2002	2003	2004	2005
	%	%	%	%	%	%	%
Girls							
<i>Smoker</i>							
Daily	17.1	16.3	15.2***	14.9***	14.2***	11.4***	10.7***
Weekly	8.1	7.6	6.7***	5.8***	5.5***	5.2***	4.5***
Monthly	7.2	7.5	6.5*	6.0***	5.2***	4.6***	5.2***
Less often	14.7	13.8*	14.8	11.5***	11.1***	8.9***	8.7***
Total \geq monthly	32.4	31.3	28.4***	26.6***	24.9***	21.2***	20.4***
<i>Non-smoker</i>							
Previous	23.1	23.4	22.5	26.2***	24.9***	25.6***	24.3***
Never smoked	29.9	31.5**	34.3	35.8***	39.1***	44.3***	46.6***
(n)	(14,564)	(14,471)	(14,987)	(14,936)	(16,575)	(16,323)	(17,043)
Boys							
<i>Smoker</i>							
Daily	14.1	14.0	11.6***	9.9***	9.9***	8.1***	7.2***
Weekly	5.2	5.0	4.6*	3.6***	3.2***	2.8***	2.7***
Monthly	5.4	5.3	4.8*	3.8***	3.4***	2.9***	3.0***
Less often	14.0	13.3	14.7	10.9***	9.0***	6.5***	6.6***
Total \geq monthly	24.7	24.4	21.1***	17.4***	16.4***	13.8***	12.9***
<i>Non-smoker</i>							
Previous	28.0	27.7	26.6**	30.6***	28.7	29.9***	28.1***
Never smoked	33.3	34.6*	37.6***	41.2***	46.0***	49.9***	52.5***
(n)	(14,468)	(14,559)	(14,411)	(14,349)	(16,352)	(15,598)	(15,718)

* $p < 0.05$, ** $p < 0.01$, *** $p < 0.001$, compared with 1999, adjusted for age & ethnicity

Table 3: Percentage change in proportion of Year 10 students smoking cigarettes daily, total smoking monthly or more often, or never smoked, during 2000-2005, compared with 1999, adjusted for age and ethnicity, for the *total sample* and also by *sex*.

Smoking Category	1999	2000	2001	2002	2003	2004	2005
	%	%	%	%	%	%	%
Both Sexes*							
Daily	0	-2 (-6, 2)	-14 (-17,-10)	-20 (-23,-17)	-23 (-26,-20)	-37 (-40,-34)	-42 (-44,-40)
Total \geq monthly	0	-2 (-5, 1)	-13 (-15,-11)	-22 (-24,-20)	-27 (-29,-25)	-38 (-40,-36)	-41 (-43,-39)
Never smoked	0	4 (2, 7)	14 (11, 16)	21 (18, 23)	33 (30, 35)	46 (43, 49)	54 (51, 57)
Girls							
Daily	0	-4 (-9, 1)	-10 (-15, -6)	-13 (-17, -8)	-17 (-21,-13)	-33 (-37,-29)	-36 (-40,-33)
Total \geq monthly	0	-3 (-6, 0)	-12 (-15, -9)	-17 (-20,-15)	-22 (-25,-20)	-34 (-36,-31)	-36 (-38,-34)
Never smoked	0	5 (2, 9)	13 (10, 17)	19 (15, 23)	28 (25, 32)	45 (41, 49)	53 (49, 58)
Boys							
Daily	0	0 (-5, 6)	-18 (-23,-13)	-29 (-33,-24)	-31 (-35,-27)	-42 (-46,-38)	-49 (-53,-45)
Total \geq monthly	0	-1 (-5, 3)	-15 (-19,-11)	-29 (-32,-26)	-34 (-37,-31)	-44 (-46,-41)	-48 (-50,-45)
Never smoked	0	4 (0, 7)	14 (10, 17)	22 (19, 26)	36 (33, 40)	47 (43, 51)	56 (52, 60)

* Also adjusted for sex.

Fig 1: Relative Risk (95% CI) of **daily smoking**, compared with 1999, adjusted for age & ethnicity

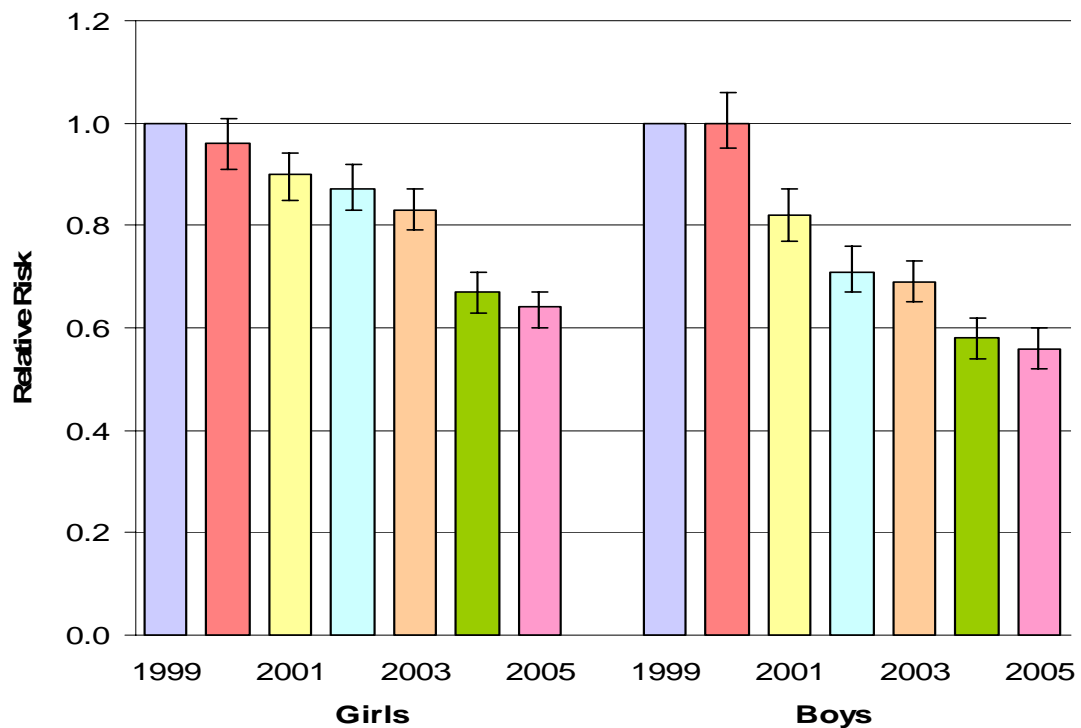


Fig 2: Relative Risk (95% CI) of **never smoking**, compared with 1999, adjusted for age & ethnicity

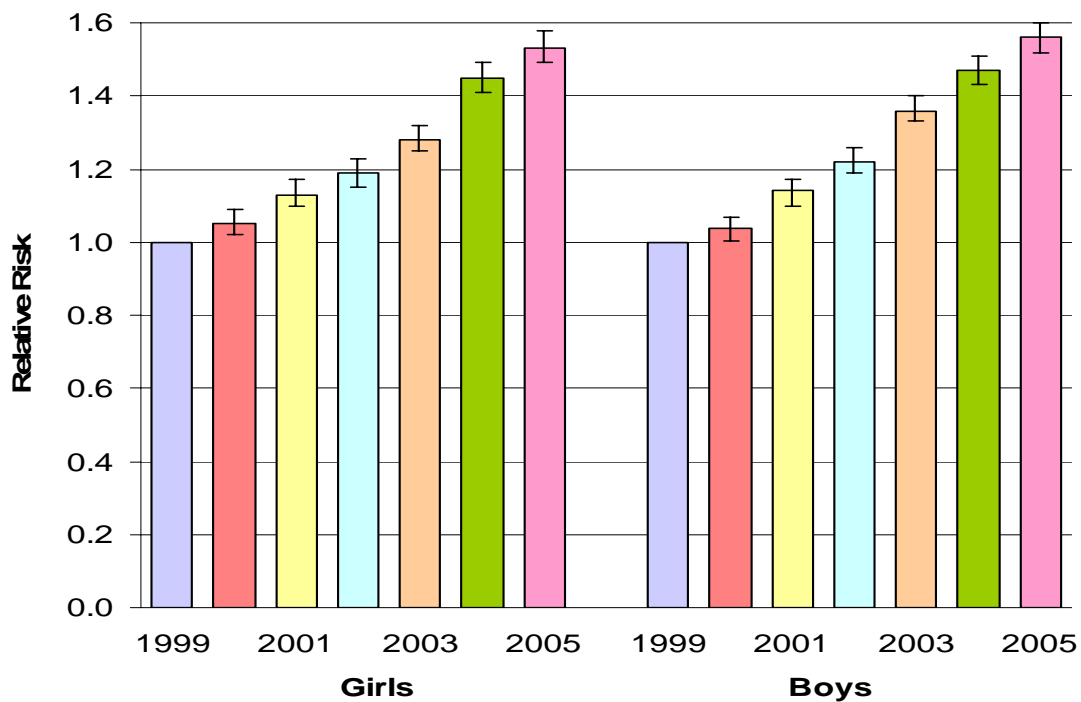


Table 4a: Trends in proportion of *Female* Year 10 students smoking cigarettes daily, total smoking monthly or more often, or never smoked, during 1999-2005, by *ethnicity*.

Smoking Category	1999	2000	2001	2002	2003	2004	2005
	%	%	%	%	%	%	%
<i>Maori</i>							
Daily	36.2	37.1	34.3	34.3	34.2	29.1***	26.5***
Total \geq monthly	50.9	51.1	47.5*	47.8*	47.4*	42.2***	41.2***
Never smoked	12.4	11.1	12.4	12.3	15.0**	18.0***	18.1***
(n)	(2448)	(2480)	(2574)	(2653)	(2934)	(3142)	(2958)
<i>Pacific</i>							
Daily	23.0	19.4	19.5	17.6**	18.1**	13.2***	14.5***
Total \geq monthly	33.3	31.2	29.4	28.5*	26.9**	26.3***	25.5***
Never smoked	31.2	33.1	31.8	30.2	32.2	37.1*	37.4**
(n)	(881)	(792)	(952)	(880)	(1168)	(1108)	(1139)
<i>Asian</i>							
Daily	5.9	5.1	3.2**	3.9*	4.5	2.9***	2.9***
Total \geq monthly	10.4	9.0	7.7**	7.3*	7.3**	5.9***	5.3***
Never smoked	64.4	66.2	71.9***	71.7***	74.1***	75.5***	76.4***
(n)	(1014)	(965)	(1176)	(1158)	(1531)	(1575)	(1516)
<i>European/Other</i>							
Daily	13.1	12.2	11.4***	10.8***	9.8***	7.2***	7.3***
Total \geq monthly	30.0	28.7	25.9***	23.2***	21.1***	16.7***	16.5***
Never smoked	30.6	33.0***	35.7***	38.2***	41.4***	48.2***	50.9***
(n)	(10221)	(10534)	(10285)	(10245)	(10942)	(10498)	(11430)

* $p < 0.05$, ** $p < 0.01$, *** $p < 0.001$, compared with 1999, adjusted for age

Table 4b: Trends in proportion of *Male* Year 10 students smoking cigarettes daily, total smoking monthly or more often, or never smoked, during 1999-2005, by *ethnicity*.

Smoking Category	1999	2000	2001	2002	2003	2004	2005
	%	%	%	%	%	%	%
<i>Maori</i>							
Daily	23.6	24.2	19.1***	16.8***	19.4***	16.2***	14.0***
Total \geq monthly	33.6	33.7	28.7***	24.9***	27.0***	24.4***	21.3***
Never smoked	21.4	21.9	24.9**	25.8***	29.4***	32.3***	34.6***
(n)	(2199)	(2208)	(2462)	(2241)	(2844)	(2905)	(2719)
<i>Pacific</i>							
Daily	16.6	16.8	14.3	10.8***	12.5*	11.8**	10.2***
Total \geq monthly	23.7	25.8	23.0	16.5***	19.7*	17.7**	16.3***
Never smoked	36.3	37.0	38.5	42.8**	44.7***	44.0***	45.1***
(n)	(873)	(892)	(9042)	(1010)	(1128)	(1192)	(1107)
<i>Asian</i>							
Daily	7.9	9.4	7.2	7.5	6.4	3.8***	5.3*
Total \geq monthly	13.4	14.6	11.4	11.2	10.2*	6.9***	8.2***
Never smoked	59.9	59.2	63.7	64.4*	69.1***	75.1***	72.0***
(n)	(1138)	(1112)	(999)	(1225)	(1645)	(1502)	(1601)
<i>European/Other</i>							
Daily	12.6	12.1	10.0***	8.6***	7.6***	5.9***	5.4***
Total \geq monthly	24.2	23.3	20.0***	16.6***	14.2***	11.2***	11.0***
Never smoked	32.7	34.5*	38.0***	41.6***	46.9***	51.9***	55.1***
(n)	(10258)	(10347)	(10046)	(9873)	(10735)	(9999)	(10291)

* $p < 0.05$, ** $p < 0.01$, *** $p < 0.001$, compared with 1999, adjusted for age

Table 5a: Percentage change in proportion of *Female* Year 10 students smoking cigarettes daily, total smoking monthly or more often, or never smoked, during 2000-2005, compared with 1999, adjusted for age, by *ethnicity*.

Smoking Category	1999	2000	2001	2002	2003	2004	2005
	%	%	%	%	%	%	%
<i>Maori</i>							
Daily	0	3 (-5, 11)	-5 (-11, 3)	-4 (-11, 3)	-5 (-11, 2)	-17 (-23,-10)	-26 (-31,-19)
Total \geq monthly	0	1 (-5, 6)	-6 (-12, -1)	-6 (-11, 0)	-7 (-12, -1)	-16 (-20,-11)	-18 (-23,-14)
Never smoked	0	-11 (-23, 4)	0 (-14, 15)	-2 (-15, 14)	20 (5, 37)	41 (23, 61)	44 (27, 65)
<i>Pacific</i>							
Daily	0	-15 (-30, 2)	-15 (-29, 1)	-23 (-36, -8)	-26 (-34, -7)	-45 (-55,-32)	-37 (-48,-24)
Total \geq monthly	0	-6 (-18, 8)	-11 (-23, 1)	-14 (-25, -1)	-19 (-29, -7)	-21 (-31, -9)	-23 (-33,-12)
Never smoked	0	6 (-8, 21)	2 (-11, 17)	-3 (-16, 11)	3 (-10, 17)	17 (3, 33)	19 (5, 34)
<i>Asian</i>							
Daily	0	-14 (-40, 24)	-45 (-63,-19)	-34 (-55, -4)	-24 (-46, 7)	-52 (-67,-29)	-50 (-66,-27)
Total \geq monthly	0	-13 (-33, 15)	-26 (-43, -3)	-29 (-46, -7)	-29 (-45, -9)	-43 (-66,-25)	-48 (-60,-31)
Never smoked	0	3 (-3, 10)	12 (5, 18)	11 (5, 18)	15 (9, 22)	18 (12, 24)	19 (13, 25)
<i>European/Other</i>							
Daily	0	-6 (-13, 1)	-12 (-18, -5)	-16 (-22,-10)	-24 (-30,-18)	-42 (-47,-37)	-43 (-48,-38)
Total \geq monthly	0	-4 (-8, 1)	-13 (-17, -9)	-22 (-26,-19)	-29 (-33,-26)	-43 (-46,-40)	-44 (-47,-41)
Never smoked	0	8 (3, 12)	16 (12, 21)	24 (20, 29)	35 (30, 40)	55 (49, 61)	65 (60, 71)

Table 5b: Percentage change in proportion of *Male* Year 10 students smoking cigarettes daily, total smoking monthly or more often, or never smoked, during 2000-2005, compared with 1999, adjusted for age, by *ethnicity*.

Smoking Category	1999	2000	2001	2002	2003	2004	2005
	%	%	%	%	%	%	%
<i>Maori</i>							
Daily	0	3 (-7, 15)	-19 (-27, -9)	-28 (-36,-19)	-17 (-25,-7)	-28 (-36,-19)	-40 (-47,-32)
Total \geq monthly	0	1 (-7, 9)	-14 (-21, -6)	-25 (-32,-18)	-19 (-26,-12)	-25 (-31,-18)	-36 (-42,-30)
Never smoked	0	2 (-9, 14)	16 (5, 29)	20 (8, 33)	37 (24, 51)	47 (33, 62)	60 (46, 77)
<i>Pacific</i>							
Daily	0	1 (-18, 25)	-14 (-31, 8)	-34 (-47,-16)	-24 (-38,-6)	-26 (-41,-8)	-37 (-50,-21)
Total \geq monthly	0	9 (-8, 28)	-3 (-18, 15)	-29 (-41,-15)	-16 (-29,-1)	-24 (-36,-10)	-30 (-41,-16)
Never smoked	0	2 (-10, 15)	6 (-6, 19)	17 (4, 31)	23 (10, 37)	21 (9, 35)	23 (10, 37)
<i>Asian</i>							
Daily	0	24 (-5, 63)	-6 (-30, 27)	-4 (-27, 27)	-18 (-37, 8)	-48 (-62,-28)	-31 (-48,-8)
Total \geq monthly	0	13 (-8, 39)	-13 (-31, 10)	-16 (-32, 5)	-22 (-37, -5)	-45 (-66,-30)	-37 (-49,-21)
Never smoked	0	-2 (-9, 5)	6 (-1, 13)	7 (1, 14)	15 (8, 22)	24 (17, 31)	19 (13, 26)
<i>European/Other</i>							
Daily	0	-3 (-9, 5)	-19 (-25,-13)	-31 (-36 -25)	-39 (-44,-34)	-51 (-55,-46)	-56 (-60,-52)
Total \geq monthly	0	-3 (-7, 2)	-17 (-21,-12)	-31 (-35,-27)	-41 (-44,-37)	-52 (-55,-49)	-54 (-57,-51)
Never smoked	0	5 (1, 9)	16 (12, 20)	27 (22, 31)	43 (38, 48)	55 (50, 60)	67 (62, 73)

Fig 3: Relative Risk (95% CI) of daily & never smoking, compared with 1999, adjusted for age - **Maori girls**

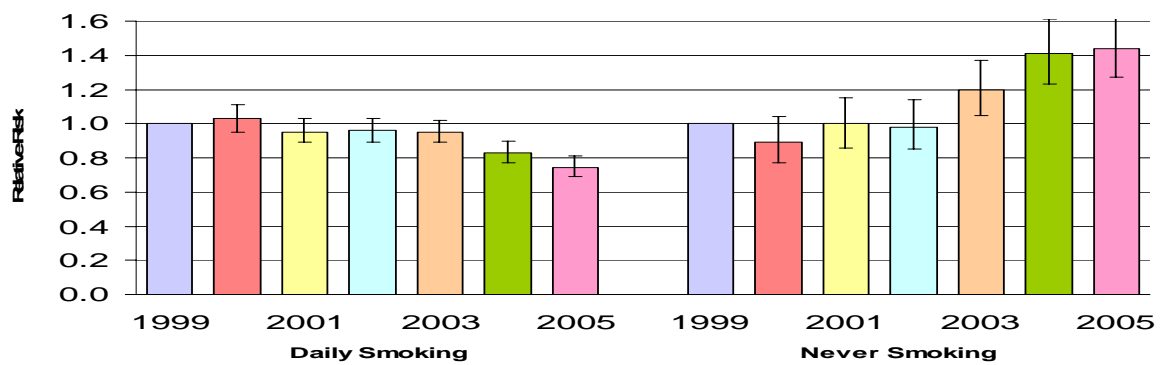


Fig 4: Relative Risk (95% CI) of daily & never smoking, compared with 1999, adjusted for age - **Pacific girls**

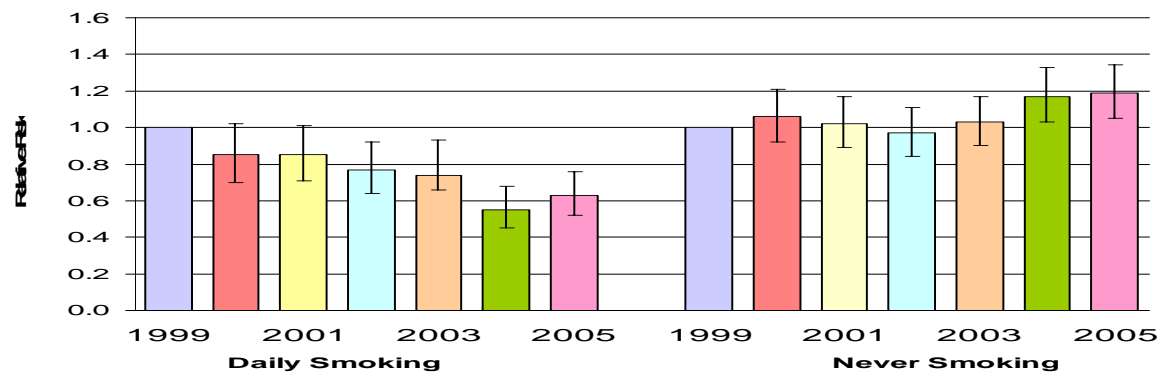


Fig 5: Relative Risk (95% CI) of daily & never smoking, compared with 1999, adjusted for age - **Asian girls**

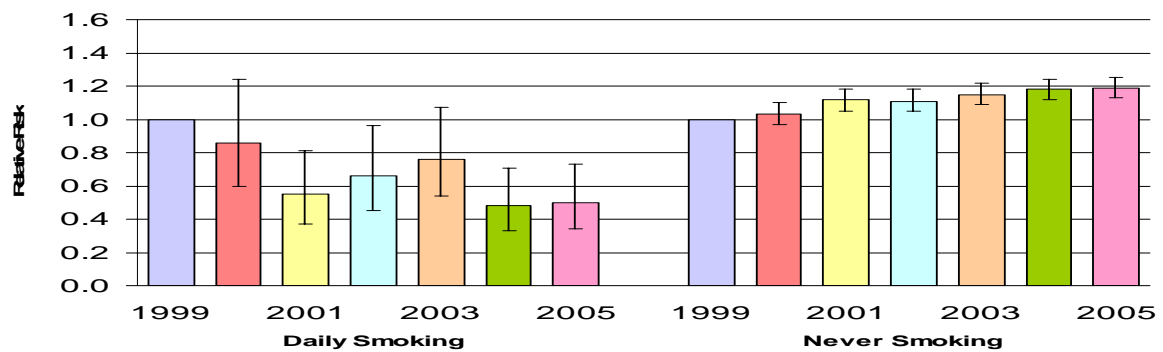
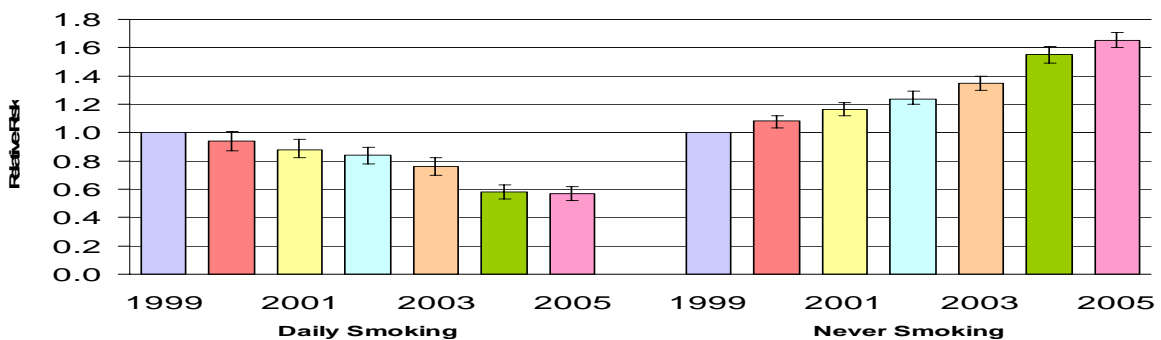


Fig 6: Relative Risk (95% CI) of daily & never smoking, compared with 1999, adjusted for age - **European girls**



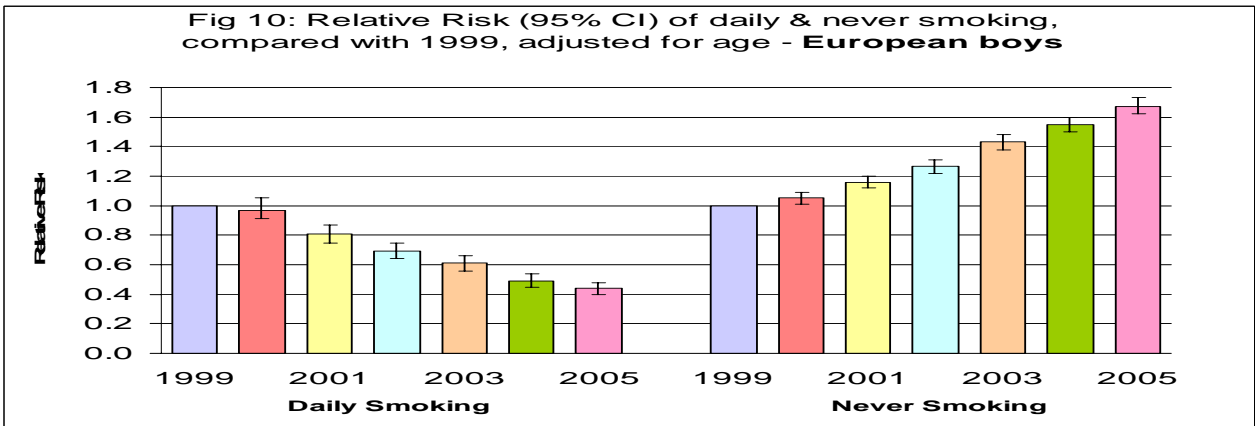
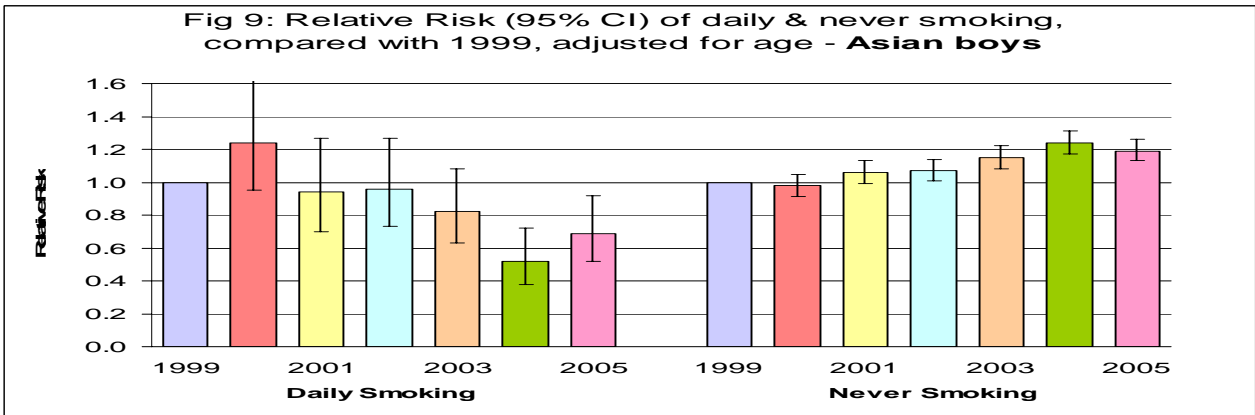
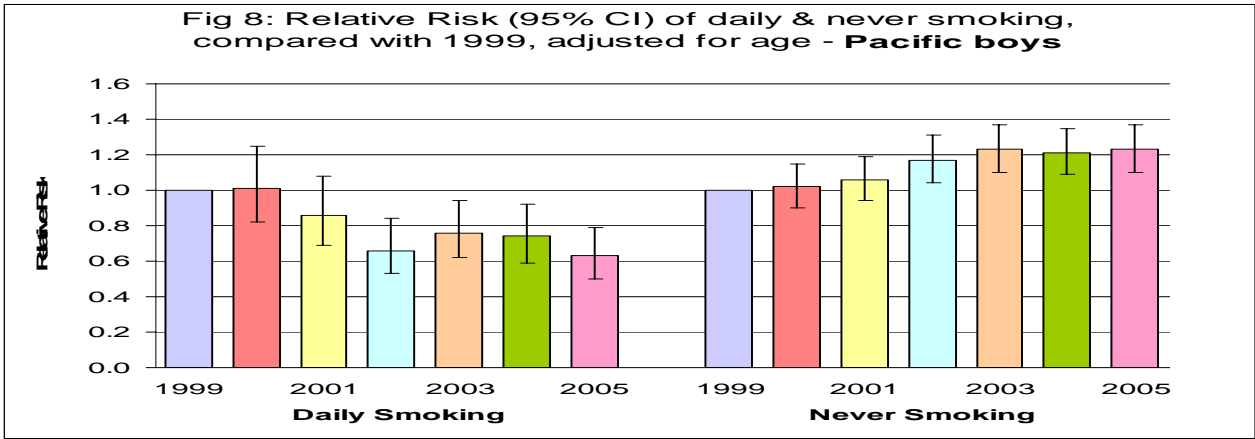
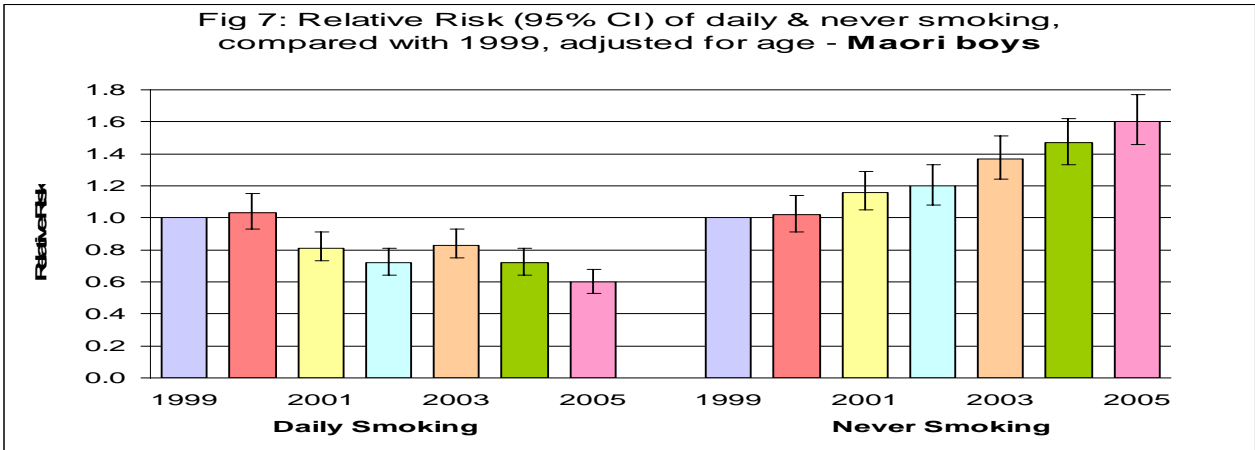


Table 6: Age adjusted relative risks of daily smoking associated with ethnicity, compared with European/Other students, by *sex and year of survey*.

Year	Relative Risk (95% CI)		
	Maori	Pacific	Asian
<i>Girls</i>			
1999	2.76 (2.56, 2.97)	1.75 (1.53, 1.99)	0.45 (0.35, 0.58)
2000	3.04 (2.83, 3.27)	1.59 (1.37, 1.85)	0.42 (0.32, 0.55)
2001	3.01 (2.79, 3.24)	1.69 (1.47, 1.95)	0.28 (0.20, 0.30)
2002	3.16 (2.93, 3.41)	1.62 (1.39, 1.88)	0.35 (0.26, 0.47)
2003	3.48 (3.22, 3.75)	1.84 (1.60, 2.10)	0.45 (0.36, 0.57)
2004	4.04 (3.70, 4.41)	1.83 (1.55, 2.16)	0.40 (0.30, 0.53)
2005	3.63 (3.32, 3.96)	1.98 (1.69, 2.31)	0.39 (0.29, 0.53)
<i>Boys</i>			
1999	1.88 (1.71, 2.05)	1.32 (1.13, 1.54)	0.62 (0.51, 0.76)
2000	1.98 (1.81, 2.17)	1.38 (1.18, 1.61)	0.78 (0.65, 0.94)
2001	1.90 (1.72, 2.10)	1.42 (1.20, 1.68)	0.72 (0.57, 0.91)
2002	1.96 (1.75, 2.19)	1.26 (1.05, 1.52)	0.86 (0.70, 1.06)
2003	2.57 (2.32, 2.84)	1.65 (1.39, 1.95)	0.84 (0.69, 1.02)
2004	2.73 (2.44, 3.06)	1.98 (1.66, 2.35)	0.63 (0.49, 0.83)
2005	2.60 (2.30, 2.94)	1.90 (1.57, 2.30)	0.98 (0.79, 1.23)

Table 7: Proportion of 2004 & 2005 Pacific and Asian Year 10 students smoking cigarettes daily, smoking monthly or more often, or who had never smoked, by *Pacific and Asian ethnicity*

Smoking Category	Pacific Island					Asian		
	Samoan	Cook Island	Tongan	Niuean	Other Pacific	Chinese	Indian	Other Asian
	%	%	%	%	%	%	%	%
<i>Girls</i>								
Daily	9.6	24.8	15.8	11.6	10.6	3.1	5.0	1.3
Total \geq monthly	19.9	39.1	31.7	27.3	18.4	5.6	8.1	3.9
Never smoked	42.9	25.1	33.2	33.9	41.9	78.0	73.4	75.9
(n)	(1160)	(471)	(316)	(121)	(179)	(1037)	(862)	(1192)
<i>Boys</i>								
Daily	8.4	15.0	13.1	14.5	7.7	4.8	7.4	2.0
Total \geq monthly	13.7	20.3	20.3	30.4	9.0	7.5	10.9	5.0
Never smoked	49.6	38.4	39.3	35.5	51.0	76.7	67.4	75.0
(n)	(1091)	(526)	(389)	(138)	(155)	(1148)	(878)	(1077)

Table 8a: Trends in proportion of *Female* Year 10 students smoking cigarettes daily, total smoking monthly or more often, or never smoked, during 1999-2005, by *school SES decile*.

SES	Smoking Category	1999	2000	2001	2002	2003	2004	2005
		%	%	%	%	%	%	%
1-2 (low)	Daily	28.1	26.7	27.5	29.7	29.4	26.7	22.2**
	Total \geq monthly	36.8	39.6	39.0	41.5*	38.5	38.8	34.4
	Never smoked	23.5	23.4	23.8	22.1	25.0	25.3*	30.2***
	(n)	(1235)	(1153)	(1245)	(1368)	(1375)	(1391)	(1497)
3-4	Daily	23.4	22.3	21.6*	20.0**	20.5***	16.2***	16.4***
	Total \geq monthly	37.9	36.1	33.0***	31.2***	31.1***	25.8***	27.1***
	Never smoked	25.3	26.1	29.9***	29.6**	30.0***	37.6***	36.5***
	(n)	(2363)	(2418)	(2432)	(2347)	(2906)	(3806)	(2550)
5-6	Daily	17.9	19.3	17.0	16.1*	15.0***	12.4***	12.3***
	Total \geq monthly	34.4	33.9	30.3***	28.2***	26.4***	23.0***	22.1***
	Never smoked	26.6	28.4*	31.0***	32.3***	35.4***	40.2***	41.3***
	(n)	(3850)	(3689)	(3708)	(3742)	(4131)	(3724)	(3997)
7-8	Daily	14.9	14.9	12.2**	12.8**	12.3**	8.3***	8.6***
	Total \geq monthly	30.0	32.2	27.1**	25.2***	22.8***	18.0***	18.3***
	Never smoked	32.4	30.9	34.1	37.7***	39.9***	47.0***	49.6***
	(n)	(3640)	(3621)	(3404)	(3585)	(3529)	(3949)	(4008)
9-10	Daily	10.3	8.0**	8.9	7.1***	6.5***	4.6***	4.8***
	Total \geq monthly	27.4	22.9***	22.1***	18.4***	17.0***	13.3***	13.0***
	Never smoked	36.5	40.7**	42.8***	45.9***	51.6***	57.0***	58.6***
	(n)	(3415)	(3821)	(4080)	(3807)	(4519)	(4019)	(4857)

* p<0.05, ** p<0.01, *** p<0.001, compared with 1999, adjusted for age & ethnicity

Table 8b: Trends in proportion of *Male* Year 10 students smoking cigarettes daily, total smoking monthly or more often, or never smoked, during 1999-2005, by *school SES decile*.

SES	Smoking Category	1999	2000	2001	2002	2003	2004	2005
		%	%	%	%	%	%	%
1-2 (low)	Daily	19.0	17.6	16.9	15.0**	16.9	15.3*	11.3***
	Total \geq monthly	27.4	24.6	25.0	20.3***	23.5*	21.8**	16.4***
	Never smoked	34.0	32.0	35.8	38.5*	39.7**	40.0**	45.9***
	(n)	(1204)	(1066)	(1379)	(1361)	(1535)	(1612)	(1510)
3-4	Daily	15.4	16.1	12.9**	11.8***	13.3*	10.4***	10.3***
	Total \geq monthly	24.0	24.8	20.7**	18.5***	19.0***	16.1***	16.4***
	Never smoked	32.4	33.3	38.9***	40.5***	43.0***	46.6***	46.0***
	(n)	(2324)	(2814)	(2600)	(2581)	(2226)	(2555)	(2702)
5-6	Daily	15.5	14.9	13.3*	10.7***	9.9***	7.8***	8.0***
	Total \geq monthly	26.0	25.7	22.5**	19.2***	17.2***	13.4***	15.0***
	Never smoked	30.7	32.1	34.1**	37.8***	43.4***	45.7***	48.1***
	(n)	(3562)	(3234)	(3289)	(2898)	(4086)	(3641)	(3513)
7-8	Daily	13.6	12.6	10.1***	9.6***	9.2***	7.0***	6.0***
	Total \geq monthly	25.0	23.3	20.0***	17.3***	16.2***	12.1***	11.4***
	Never smoked	32.3	35.2*	37.9***	41.3***	44.5***	52.0***	55.0***
	(n)	(3735)	(4123)	(3625)	(4299)	(4290)	(4124)	(3888)
9-10	Daily	10.9	12.3*	8.4***	6.1***	5.6***	4.7***	4.1***
	Total \geq monthly	22.9	24.2	19.3***	13.8***	11.3***	10.7***	8.8***
	Never smoked	37.3	38.7	40.6**	45.4***	54.5***	58.5***	60.7***
	(n)	(3568)	(3259)	(3447)	(3194)	(3908)	(3528)	(4044)

* p<0.05, ** p<0.01, *** p<0.001, compared with 1999, adjusted for age & ethnicity

Table 9a: Percentage change in proportion of *Female* Year 10 students smoking cigarettes daily, total smoking monthly or more often, or never smoked, during 2000-2005, compared with 1999, adjusted for age and ethnicity, by *school SES decile*.

SES	Smoking Category	1999	2000	2001	2002	2003	2004	2005
		%	%	%	%	%	%	%
1-2 (low)	Daily	0	-7 (-18, 6)	-4 (-15, 9)	3 (-8, 16)	3 (-8, 16)	-8 (-19, 4)	-19 (-28, -8)
	Total \geq monthly	0	6 (-4, 17)	5 (-5, 16)	10 (0, 21)	4 (-6, 14)	3 (-7, 13)	-5 (-14, 5)
	Never smoked	0	3 (-10, 19)	1 (-12, 16)	-1 (-14, 13)	7 (-6, 22)	14 (0, 30)	29 (14, 46)
3-4	Daily	0	-7 (-16, 3)	-12 (-20, -2)	-14 (-23, -5)	-16 (-24, -7)	-31 (-38,-24)	-33 (-40,-25)
	Total \geq monthly	0	-6 (-13, 1)	-15 (-21, -8)	-17 (-23,-10)	-20 (-25,-14)	-32 (-37,-27)	-30 (-36,-24)
	Never smoked	0	7 (-3, 17)	23 (12, 34)	15 (5, 26)	22 (12, 32)	51 (39, 63)	49 (37, 62)
5-6	Daily	0	7 (-2, 18)	-5 (-14, 5)	-12 (-20, -3)	-16 (-23, -7)	-30 (-37,-22)	-31 (-38,-23)
	Total \geq monthly	0	-3 (-8, 4)	-12 (-17, -6)	-19 (-24,-13)	-22 (-27,-17)	-32 (-37,-27)	-35 (-40,-30)
	Never smoked	0	9 (1, 17)	16 (9, 25)	23 (15, 32)	31 (22, 39)	47 (38, 57)	54 (45, 64)
7-8	Daily	0	0 (10, 11)	-16 (-26, -6)	-14 (-23, -4)	-17 (-26, -6)	-43 (-50,-35)	-42 (-49,-34)
	Total \geq monthly	0	7 (0, 14)	-9 (-16, -2)	-16 (-22,-10)	-23 (-29,-17)	-39 (-44,-34)	-38 (-43,-33)
	Never smoked	0	-4 (-11, 2)	5 (-2, 12)	16 (9, 23)	22 (14, 29)	42 (34, 50)	51 (43, 60)
9-10	Daily	0	-20 (-31, -8)	-11 (-22, 2)	-29 (-39, -8)	-37 (-45,-27)	-53 (-60,-44)	-53 (-60,-45)
	Total \geq monthly	0	-15 (-22, -8)	-17 (-23,-10)	-31 (-37,-25)	-36 (-41,-30)	-49 (-53,-43)	-51 (-55,-46)
	Never smoked	0	10 (4, 16)	13 (7, 20)	23 (16, 29)	36 (30, 43)	49 (42, 57)	56 (49, 64)

Table 9b: Percentage change in proportion of *Male* Year 10 students smoking cigarettes daily, total smoking monthly or more often, or never smoked, during 2000-2005, compared with 1999, adjusted for age and ethnicity, by *school SES decile*.

SES	Smoking Category	1999	2000	2001	2002	2003	2004	2005
		%	%	%	%	%	%	%
1-2 (low)	Daily	0	-8 (-22, 10)	-12 (-25, 4)	-21 (-33, -6)	-11 (-24, 4)	-17 (-30, -2)	-39 (-49,-26)
	Total \geq monthly	0	-11 (-23, 2)	-9 (-20, 3)	-26 (-36,-15)	-14 (-25, -3)	-19 (-29, -8)	-39 (-47,-30)
	Never smoked	0	-4 (-14, 8)	6 (-4, 18)	14 (3, 26)	18 (7, 30)	18 (7, 30)	35 (22, 48)
3-4	Daily	0	5 (-8, 19)	-19 (-29, 7)	-23 (-33,-11)	-16 (-27, -3)	-33 (-42,-22)	-35 (-44,-25)
	Total \geq monthly	0	3 (-6, 14)	-16 (-24, -6)	-22 (-30,-13)	-22 (-30,-13)	-33 (-40,-24)	-33 (-40,-25)
	Never smoked	0	3 (-5, 11)	24 (15, 33)	24 (15, 33)	34 (25, 45)	45 (35, 56)	45 (35, 55)
5-6	Daily	0	3 (-13, 9)	-13 (-23, -3)	-31 (-39,-21)	-37 (-44,-29)	-50 (-56,-42)	-48 (-54,-40)
	Total \geq monthly	0	0 (-8, 8)	-13 (-20, -5)	-26 (-32,-19)	-34 (-39,-28)	-47 (-52,-42)	-41 (-47,-36)
	Never smoked	0	3 (-4, 11)	11 (4, 19)	22 (14, 31)	40 (32, 49)	46 (38, 55)	55 (46, 64)
7-8	Daily	0	-6 (-16, 6)	-25 (-34,-15)	-29 (-37,-20)	-33 (-41,-24)	-47 (-54,-39)	-56 (-62,-49)
	Total \geq monthly	0	-6 (-13, 2)	-20 (-26,-12)	-30 (-36,-23)	-35 (-41,-30)	-51 (-56,-46)	-54 (-59,-49)
	Never smoked	0	8 (1, 15)	17 (10, 25)	27 (20, 35)	37 (30, 45)	59 (51, 68)	70 (61, 79)
9-10	Daily	0	15 (1, 31)	-22 (-32,-10)	-42 (-50,-31)	-47 (-55,-38)	-54 (-62,-45)	-62 (-68,-54)
	Total \geq monthly	0	7 (-2, 17)	-15 (-23, -7)	-38 (-44,-31)	-48 (-54,-43)	-50 (-55,-44)	-60 (-64,-54)
	Never smoked	0	3 (-3, 9)	9 (3, 15)	19 (12, 26)	39 (32, 46)	46 (39, 54)	55 (48, 63)

Table 10: Trends in proportion of Year 10 students (male & female) smoking cigarettes daily, total smoking monthly or more often, or never smoked, during 2001-2005, by *parental smoking*.

Parental Smoking	Student Smoking	2001	2002	2003	2004	2005
		%	%	%	%	%
Both	Daily	31.6	31.4	29.7	24.8	25.1
	Total \geq monthly	44.1	42.1	41.0	36.2	36.4
	Never smoked	18.2	18.9	20.1	23.7	25.4
	(n)	(3977)	(3971)	(4656)	(4764)	(4636)
One	Daily	18.3	16.5	15.7	12.8	11.2
	Total \geq monthly	31.2	28.2	25.9	22.2	20.7
	Never smoked	26.1	28.8	33.2	37.0	39.1
	(n)	(7807)	(7331)	(8526)	(8185)	(8243)
Neither	Daily	7.2	6.5	6.2	4.6	4.3
	Total \geq monthly	17.5	15.1	13.4	10.7	10.4
	Never smoked	44.3	46.5	52.0	57.4	59.5
	(n)	(17487)	(17387)	(19300)	(18627)	(19497)
<i>Absolute change from 2001</i>						
Both	Daily	0	-0.2	-1.9*	-6.8***	-6.5***
	Total \geq monthly	0	-2.0*	-3.1**	-7.9***	-7.7***
	Never smoked	0	0.7	1.9	5.5***	7.2***
One	Daily	0	-1.8**	-2.6***	-5.5***	-7.1***
	Total \geq monthly	0	-3.0***	-5.3***	-9.0***	-10.5***
	Never smoked	0	2.7***	7.1***	10.9***	13.0***
Neither	Daily	0	-0.7*	-1.0***	-2.6***	-2.9***
	Total \geq monthly	0	-2.4***	-4.1***	-6.8***	-7.1***
	Never smoked	0	2.2***	7.7***	13.1***	15.2***
<i>Percent change from 2001#</i>						
Both	Daily	0	-1 (-8, 5)	-7 (-13, -1)	-21 (-26, -15)	-21 (-26, -15)
	Total \geq monthly	0	-5 (-10, -1)	-8 (-12, -3)	-17 (-21, -13)	-18 (-22, -13)
	Never smoked	0	5 (-4, 15)	5 (-4, 15)	28 (18, 40)	39 (28, 51)
One	Daily	0	-10 (-16, 3)	-12 (-18, -6)	-28 (-33, -23)	-38 (-43, -34)
	Total \geq monthly	0	-10 (-14, -5)	-15 (-19, -11)	-27 (-31, -23)	-33 (-37, -30)
	Never smoked	0	10 (4, 15)	23 (17, 29)	37 (30, 43)	47 (40, 53)
Neither	Daily	0	-9 (-16, -2)	-15 (-21, -8)	-36 (-42, -31)	-40 (-45, -35)
	Total \geq monthly	0	-14 (-18, -10)	-23 (-27, -19)	-38 (-41, -35)	-40 (-43, -37)
	Never smoked	0	5 (3, 7)	16 (14, 19)	28 (25, 30)	33 (30, 36)

* $p < 0.05$, ** $p < 0.01$, *** $p < 0.001$, compared with 2001, adjusted for age, sex and ethnicity

adjusted for age, sex and ethnicity

Table 11: Trends in proportion of Year 10 students (male & female) smoking cigarettes daily, total smoking monthly or more often, or never smoked, during 2001-2005, by whether *people smoke in the house*.

People Smoke in House	Student Smoking	2001	2002	2003	2004	2005
		%	%	%	%	%
Yes	Daily	24.2	24.2	24.4	18.2	18.2
	Total \geq monthly	37.5	35.7	36.1	28.9	29.1
	Never smoked	22.1	24.1	24.8	31.0	31.4
	(n)	(8848)	(7656)	(9619)	(8651)	(8689)
No	Daily	8.8	7.7	6.7	6.6	5.7
	Total \geq monthly	19.3	16.6	14.0	13.3	12.4
	Never smoked	41.9	44.3	50.2	53.0	55.9
	(n)	(20127)	(20549)	(22556)	(23270)	(24072)
<i>Absolute change from 2001</i>						
Yes	Daily	0	0	0.2	-6.0***	-6.0***
	Total \geq monthly	0	-1.8*	-1.4*	-8.6***	-8.4***
	Never smoked	0	2.0**	2.7***	8.9***	9.3***
No	Daily	0	-1.1***	-2.1***	-2.2***	-3.1***
	Total \geq monthly	0	-2.7***	-5.3***	-6.0***	-6.9***
	Never smoked	0	2.4***	8.3***	11.1***	14.0***
<i>Percent change from 2001#</i>						
Yes	Daily	0	0 (-6, 5)	0 (-5, 5)	-23 (-28,-19)	-25 (-29,-20)
	Total \geq monthly	0	-5 (-8, -1)	-4 (-8, -1)	-21 (-24,-18)	-22 (-25,-19)
	Never smoked	0	8 (2, 14)	11 (5, 17)	35 (28, 42)	39 (33, 46)
No	Daily	0	-12 (-18, -6)	-23 (-28,-18)	-26 (-31,-21)	-35 (-40,-31)
	Total \geq monthly	0	-14 (-17,-10)	-26 (-30,-23)	-31 (-34,-28)	-36 (-39,-33)
	Never smoked	0	5 (3, 8)	18 (16, 20)	26 (23, 28)	33 (30, 35)

* $p < 0.05$, ** $p < 0.01$, *** $p < 0.001$, compared with 2001, adjusted for age, sex and ethnicity

adjusted for age, sex and ethnicity

Table 12a: Trends in proportion of Year 10 students (male & female) smoking cigarettes daily, total smoking monthly or more often, or never smoked, during 1999-2005, by 2004 district health board (DHB).

Smoking Category	1999	2000	2001	2002	2003	2004	2005
	%	%	%	%	%	%	%
Northland DHB							
Daily	17.0	18.4	16.8	14.5	15.9	14.2*	13.3***
Total \geq monthly	29.2	31.1	28.0	24.7*	25.9	23.2***	20.1***
Never smoked	26.7	28.1	28.4	30.3	32.1**	35.9***	40.3***
(n)	(1147)	(1326)	(1288)	(1044)	(1200)	(1241)	(1165)
Waitemata DHB							
Daily	14.5	12.8*	11.9**	9.5***	8.7***	7.0***	6.0***
Total \geq monthly	28.3	26.1*	22.2***	17.7***	17.2***	13.7***	12.6***
Never smoked	35.9	38.6**	41.6***	45.2***	49.3***	54.1***	56.4***
(n)	(3066)	(2978)	(2804)	(2875)	(3496)	(3114)	(3618)
Auckland DHB							
Daily	12.6	10.6	11.1	7.7***	8.3***	4.3***	5.9***
Total \geq monthly	24.0	23.3	24.4	16.6***	16.1***	11.0***	13.4***
Never smoked	40.2	39.3	40.8	47.0***	51.1***	55.8***	57.4***
(n)	(3028)	(2231)	(2327)	(2337)	(3301)	(2312)	(2366)
Counties-Manukau DHB							
Daily	17.2	13.2***	12.2***	14.3***	12.3***	9.5***	8.8***
Total \geq monthly	27.2	24.5	21.5***	24.0**	19.2***	16.2***	16.0***
Never smoked	37.7	38.7	42.3**	41.6***	51.5***	52.4***	53.0***
(n)	(2311)	(2567)	(2784)	(2618)	(3100)	(3487)	(3018)

* p<0.05, ** p<0.01, *** p<0.001, compared with 1999, adjusted for age, sex and ethnicity

Table 12b: Trends in proportion of Year 10 students (male & female) smoking cigarettes daily, total smoking monthly or more often, or never smoked, during 1999-2005, by 2004 district health board (DHB).

Smoking Category	1999	2000	2001	2002	2003	2004	2005
	%	%	%	%	%	%	%
Waikato DHB							
Daily	13.9	15.6*	15.3	14.2	13.2	10.3***	8.6***
Total \geq monthly	27.0	29.8*	28.1	25.6	23.0***	18.2***	17.6***
Never smoked	28.7	30.6	33.0***	35.5***	39.5***	45.7***	48.2***
(n)	(2786)	(2784)	(2613)	(2982)	(3432)	(3181)	(2693)
Lakes District DHB							
Daily	21.1	26.2*	20.0	21.0	18.5	12.1***	11.7***
Total \geq monthly	31.9	35.9	29.3	30.8	31.3	20.8***	20.9***
Never smoked	22.7	21.9	27.8**	27.9**	31.0***	41.1***	39.8***
(n)	(797)	(657)	(782)	(756)	(693)	(679)	(708)
Bay of Plenty DHB							
Daily	16.5	19.7	12.6***	12.9***	16.8	12.8***	11.2***
Total \geq monthly	30.1	30.5	23.1***	23.2***	24.9***	21.3***	19.2***
Never smoked	29.6	26.9	36.2***	34.7***	35.5***	41.1***	44.4***
(n)	(1282)	(1186)	(1608)	(1683)	(1170)	(1960)	(2133)
Tairāwhiti DHB							
Daily	25.7	20.1	20.3	21.2	19.6	19.2*	10.5***
Total \geq monthly	39.7	28.7	29.7	30.5	28.6*	24.4***	20.5***
Never smoked	22.3	21.2	30.3	22.6	35.5*	37.0**	37.1***
(n)	(292)	(279)	(360)	(358)	(276)	(308)	(420)

* $p < 0.05$, ** $p < 0.01$, *** $p < 0.001$, compared with 1999, adjusted for age, sex and ethnicity

Table 12c: Trends in proportion of Year 10 students (male & female) smoking cigarettes daily, total smoking monthly or more often, or never smoked, during 1999-2005, by 2004 district health board (DHB).

Smoking Category	1999	2000	2001	2002	2003	2004	2005
	%	%	%	%	%	%	%
Taranaki DHB							
Daily	12.3	13.8	15.0*	7.4*	10.6	7.2***	9.8
Total \geq monthly	22.4	25.7*	25.2*	12.6***	18.0*	15.0***	16.2**
Never smoked	34.4	31.4	34.7	50.2***	43.8***	49.1***	51.4***
(n)	(796)	(1047)	(727)	(707)	(1170)	(1147)	(1271)
Hawkes Bay DHB							
Daily	16.4	16.5	18.5	15.1	12.3***	13.1*	11.4***
Total \geq monthly	33.1	31.0	29.9	28.0***	22.8***	21.9***	22.5***
Never smoked	23.5	28.0*	29.0***	30.6***	35.9***	39.7***	39.8***
(n)	(1376)	(1288)	(1209)	(1180)	(1154)	(1272)	(1227)
Wanganui DHB							
Daily	18.8	19.5	10.9***	13.1*	14.7**	14.9**	9.8***
Total \geq monthly	30.2	31.8	20.5**	19.7**	23.2***	24.4**	16.8***
Never smoked	28.4	28.6	36.4*	35.5	38.4***	37.1***	51.8***
(n)	(602)	(441)	(341)	(259)	(756)	(377)	(554)
Mid-Central DHB							
Daily	15.3	13.6	12.8	10.7***	13.2	9.9***	12.2**
Total \geq monthly	27.7	23.6	24.1*	19.8***	22.4***	20.0***	21.5***
Never smoked	32.0	35.5	33.9	38.2***	37.8***	43.7***	44.4***
(n)	(1323)	(1313)	(1076)	(1220)	(1315)	(1301)	(1430)

* p<0.05, ** p<0.01, *** p<0.001, compared with 1999, adjusted for age, sex and ethnicity

Table 12d: Trends in proportion of Year 10 students (male & female) smoking cigarettes daily, total smoking monthly or more often, or never smoked, during 1999-2005, by 2004 district health board (DHB).

Smoking Category	1999	2000	2001	2002	2003	2004	2005
	%	%	%	%	%	%	%
Hutt Valley DHB							
Daily	16.7	15.2	13.9	13.9	15.6	10.7***	10.0***
Total \geq monthly	29.0	26.4	24.0**	20.7***	22.4***	18.0***	15.2***
Never smoked	31.8	35.3	38.0**	37.9**	39.3***	51.4***	50.3***
(n)	(1057)	(1178)	(1336)	(1047)	(1074)	(1425)	(1220)
Capital-Coast DHB							
Daily	14.8	13.4	13.0	9.8***	11.8**	9.0***	7.4***
Total \geq monthly	24.5	25.0	23.6	18.2***	19.6***	17.4***	13.3***
Never smoked	33.8	37.8	38.2**	43.4***	43.0***	50.3***	54.6***
(n)	(1273)	(1926)	(1821)	(2026)	(1972)	(1967)	(2490)
Wairarapa DHB							
Daily	18.8	16.7	16.3	16.5	13.3**	13.4*	10.8***
Total \geq monthly	33.3	31.6	31.6	27.3	19.8***	22.5***	18.3***
Never smoked	27.2	30.2	28.8	33.0	36.7**	35.5**	46.4***
(n)	(393)	(490)	(393)	(370)	(483)	(521)	(591)
Nelson-Marlborough DHB							
Daily	13.9	15.1	10.5*	9.7**	8.9***	8.1***	10.3**
Total \geq monthly	25.9	28.3	24.0	19.8***	17.7***	14.5***	18.5***
Never smoked	33.4	32.7	37.3	39.8**	42.3***	52.0***	48.2***
(n)	(1244)	(1137)	(1145)	(1355)	(1552)	(1082)	(1089)

* $p < 0.05$, ** $p < 0.01$, *** $p < 0.001$, compared with 1999, adjusted for age, sex and ethnicity

Table 12e: Trends in proportion of Year 10 students (male & female) smoking cigarettes daily, total smoking monthly or more often, or never smoked, during 1999-2005, by 2004 district health board (DHB).

Smoking Category	1999	2000	2001	2002	2003	2004	2005
	%	%	%	%	%	%	%
West Coast DHB							
Daily	22.1	16.1	17.7	11.9**	13.4**	12.0**	7.1***
Total \geq monthly	35.4	32.9	27.4*	18.1***	23.0***	19.4***	15.6***
Never smoked	26.2	18.7	25.1	35.0*	32.9	39.1**	49.1***
(n)	(263)	(155)	(299)	(243)	(292)	(299)	(224)
Canterbury DHB							
Daily	16.3	14.4*	12.3***	12.8**	11.1***	9.7***	8.2***
Total \geq monthly	32.3	27.8***	25.3***	22.9***	20.4***	18.4***	16.9***
Never smoked	29.1	31.9*	34.3***	35.5***	42.2***	44.9***	48.6***
(n)	(3055)	(3331)	(3660)	(3293)	(3741)	(3520)	(3920)
South Canterbury DHB							
Daily	13.7	16.2	12.0	13.6	12.8	10.4	7.3***
Total \geq monthly	27.1	27.4	25.0	23.5	20.4**	17.4***	14.2***
Never smoked	27.6	30.5	38.7**	35.2*	39.3***	44.1***	50.0***
(n)	(424)	(555)	(517)	(514)	(603)	(565)	(562)
Otago DHB							
Daily	15.8	18.1	12.5*	12.9*	12.5*	9.2***	10.4***
Total \geq monthly	30.5	33.6	23.8***	24.5***	21.5***	16.5***	18.5***
Never smoked	29.6	29.2	33.3	36.1***	39.3***	43.0***	46.1***
(n)	(1621)	(1731)	(1686)	(1607)	(1473)	(1472)	(1451)

* p<0.05, ** p<0.01, *** p<0.001, compared with 1999, adjusted for age, sex and ethnicity

Table 12f: Trends in proportion of Year 10 students (male & female) smoking cigarettes daily, total smoking monthly or more often, or never smoked, during 1999-2005, by 2004 district health board (DHB).

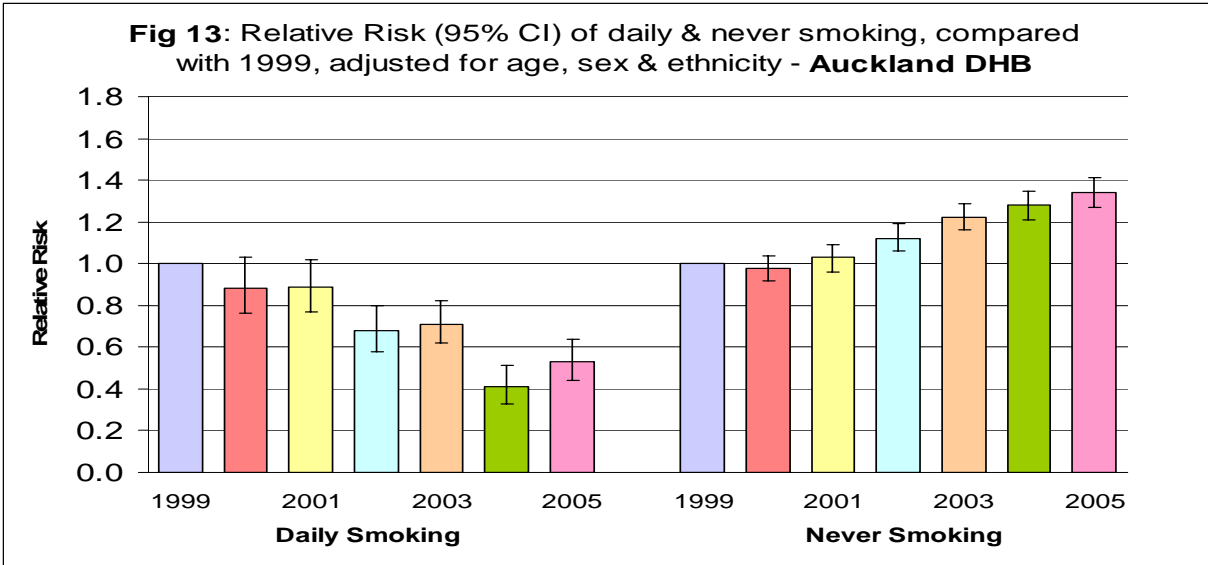
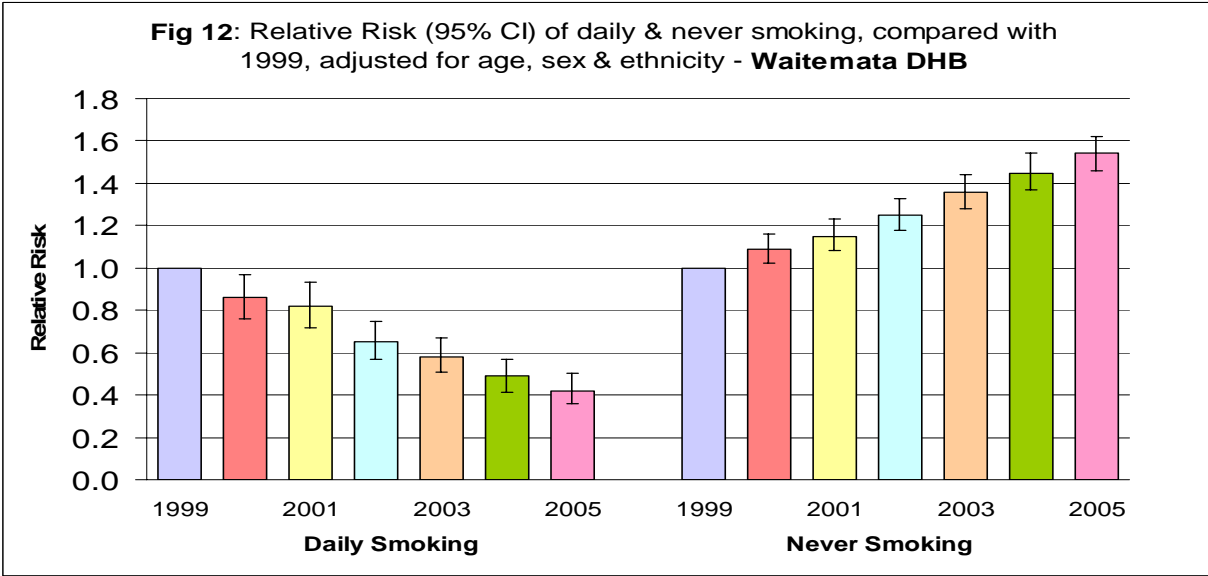
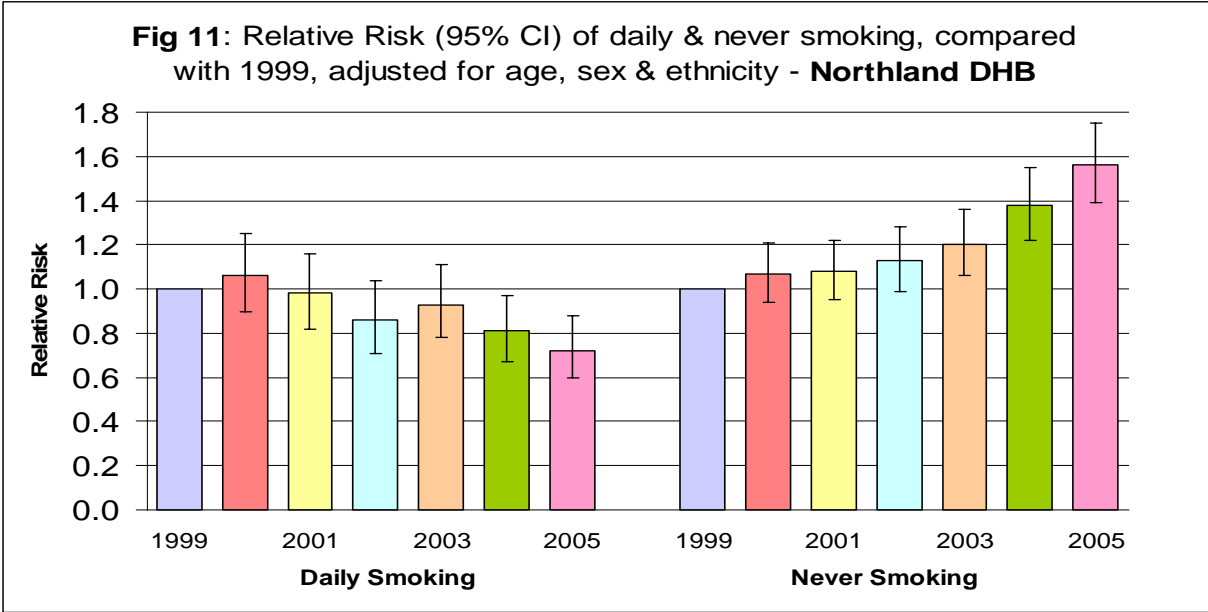
Smoking Category	1999	2000	2001	2002	2003	2004	2005
	%	%	%	%	%	%	%
Southland DHB							
Daily	16.4	18.2	14.5	16.2	18.0	11.6**	12.9*
Total \geq monthly	31.5	32.1	23.2***	26.8**	26.4*	19.8***	22.6***
Never smoked	24.7	29.6*	32.0**	34.4***	32.5***	40.2***	39.9***
(n)	(896)	(730)	(622)	(811)	(674)	(691)	(611)

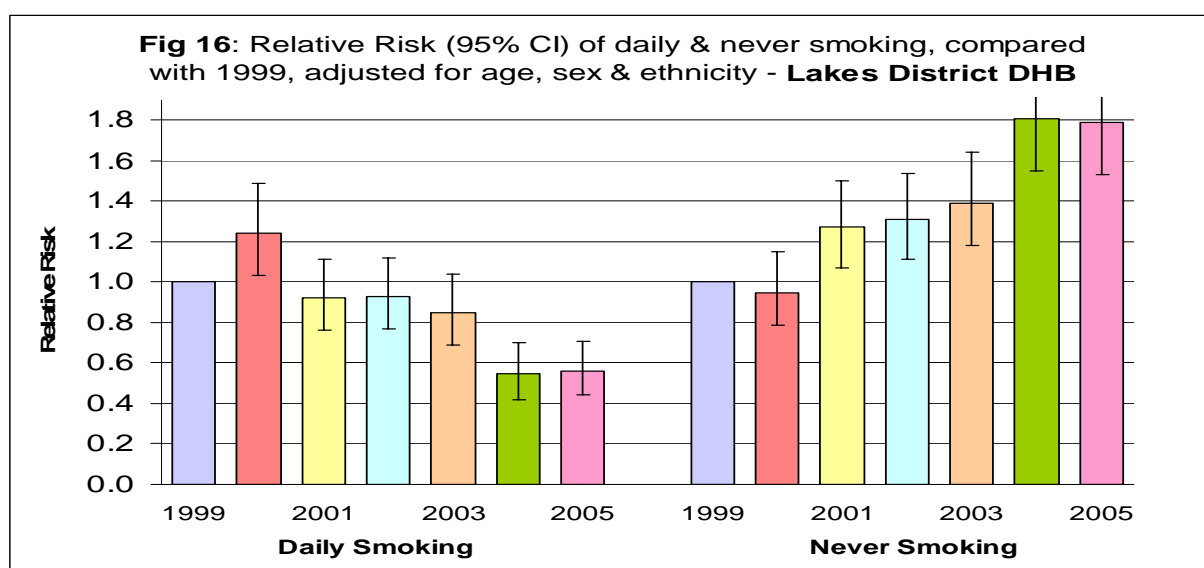
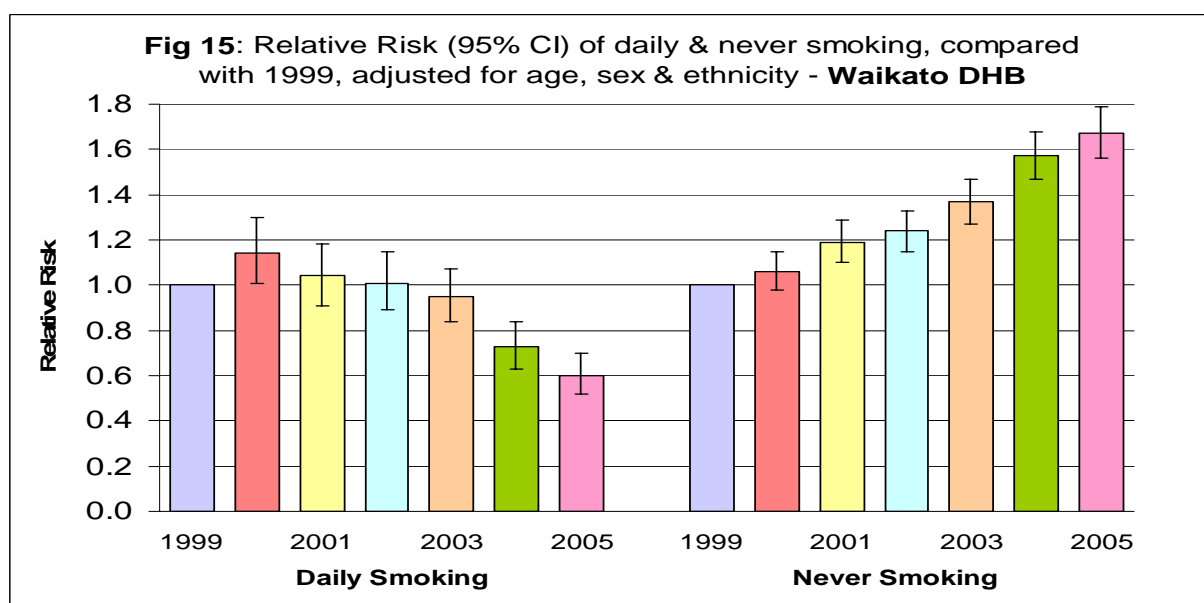
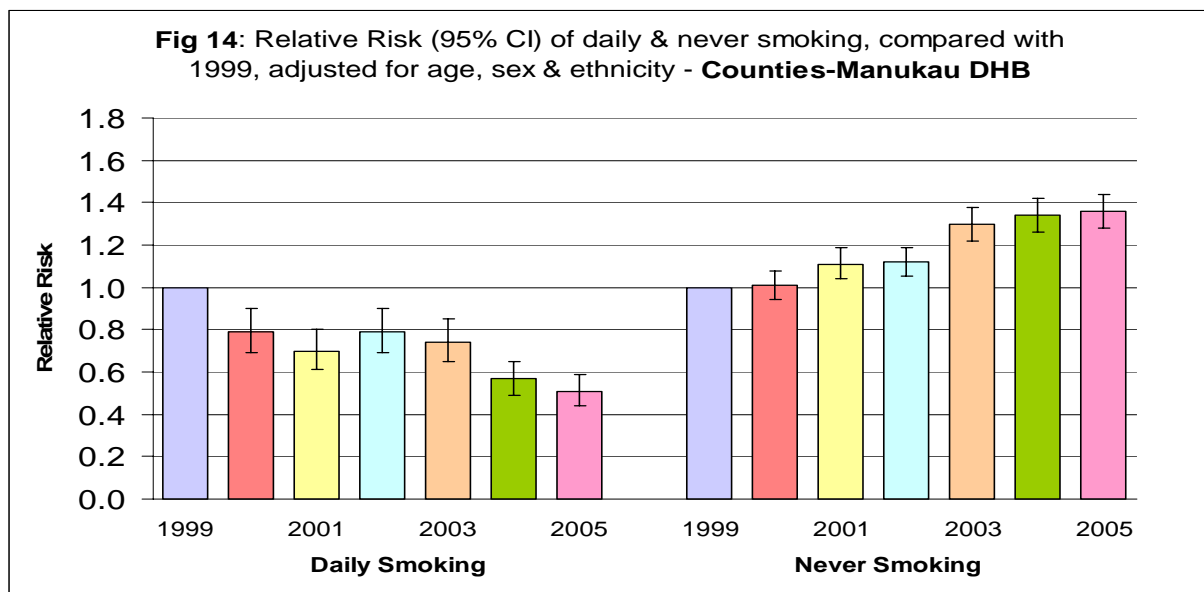
* $p < 0.05$, ** $p < 0.01$, *** $p < 0.001$, compared with 1999, adjusted for age, sex and ethnicity

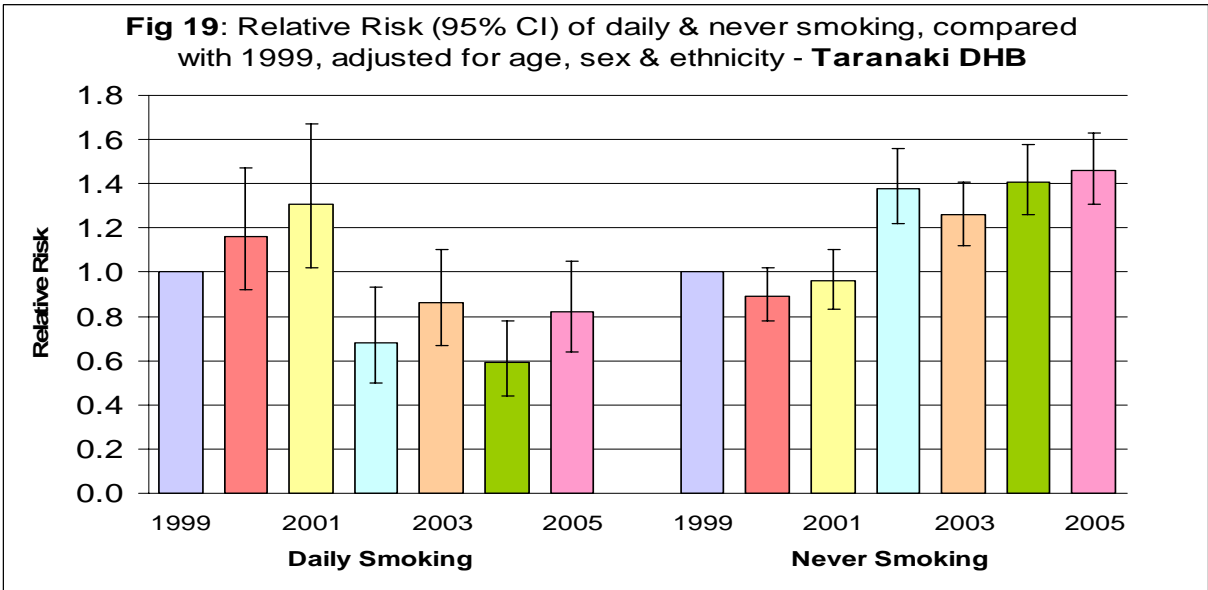
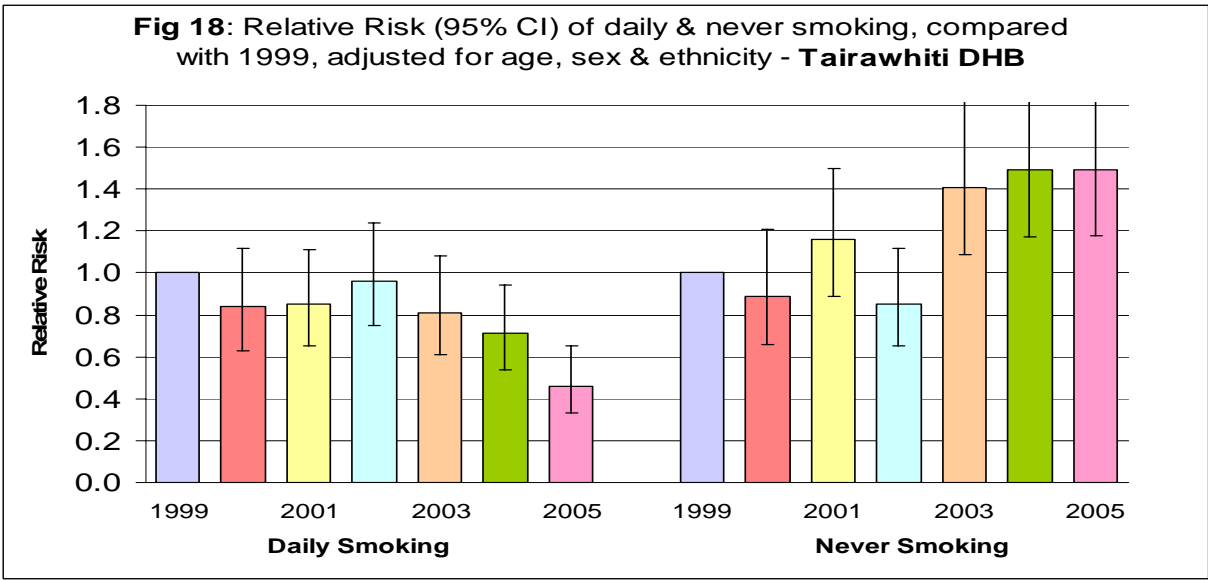
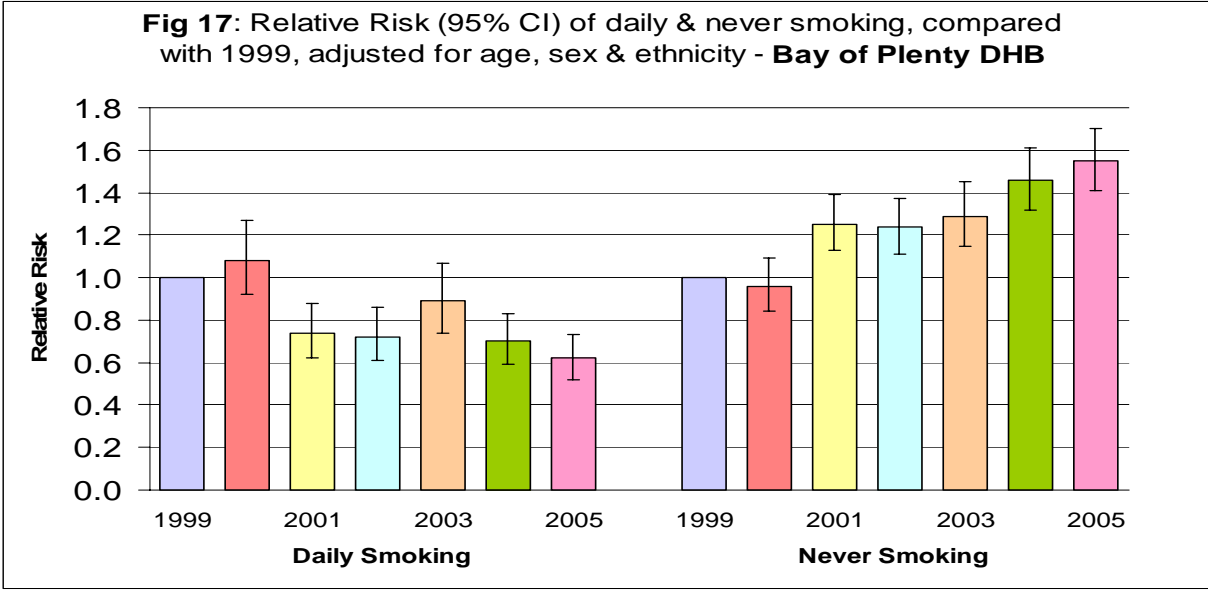
Table 13: Summary of trends in smoking prevalence, by District Health Board (1999-2005).

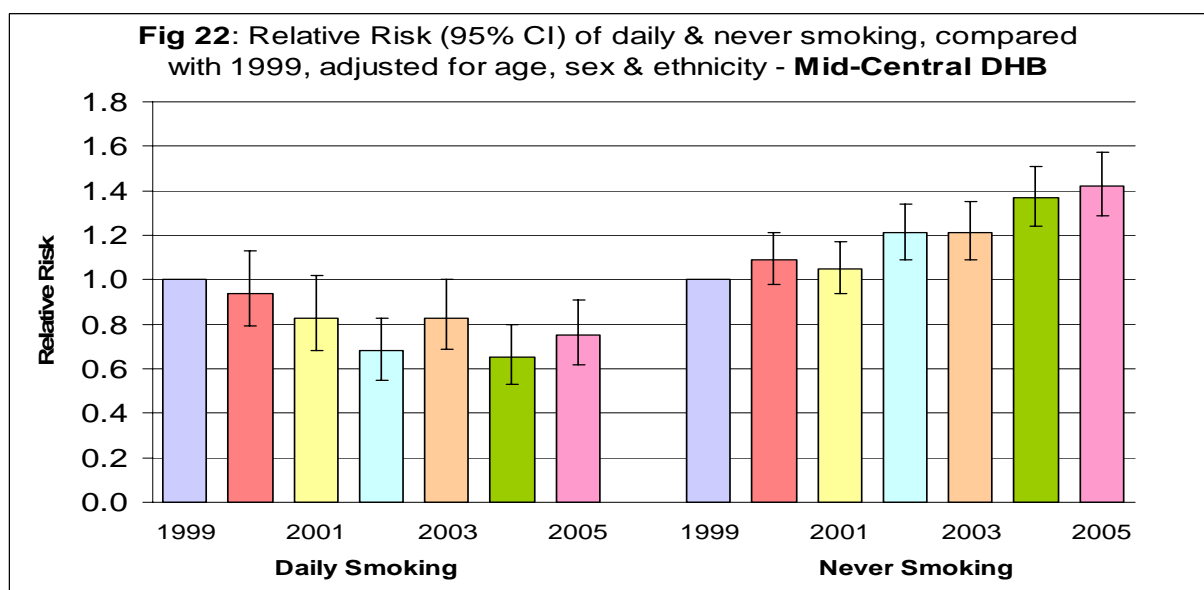
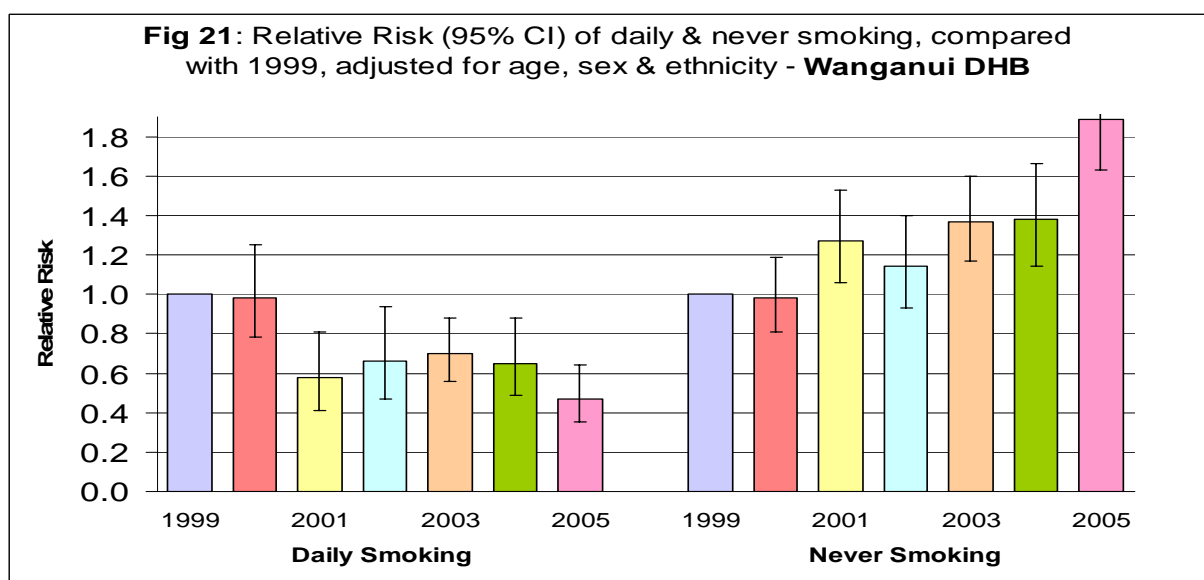
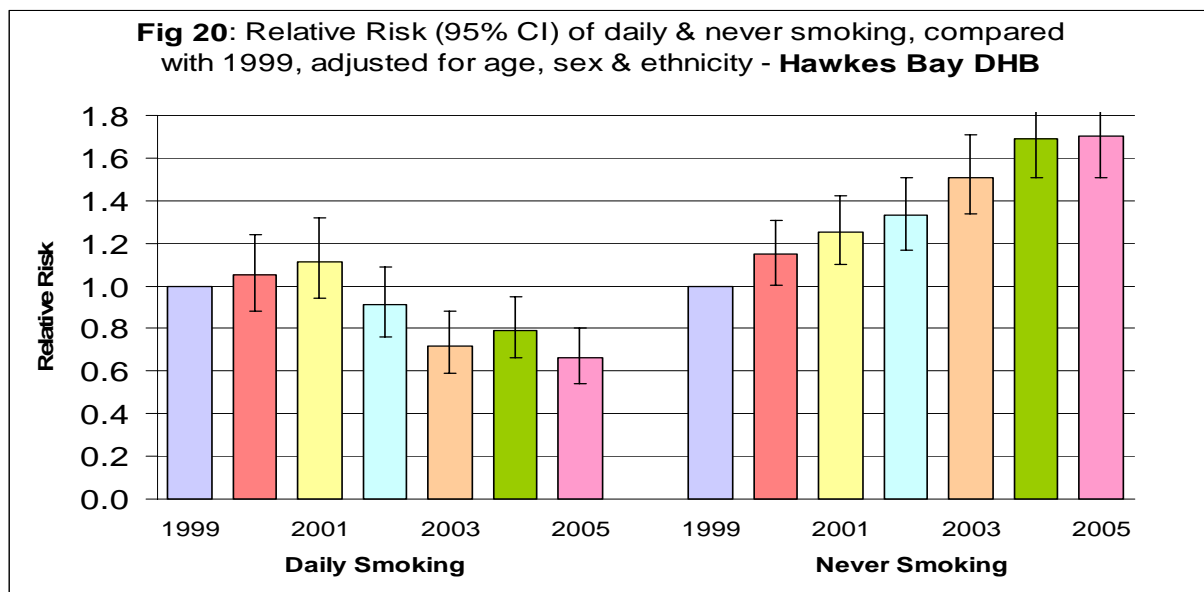
District Health Board	N 1999-2005	Daily	Total \geq Monthly	Never smokers
Northland	8411	↓	↓	↑
Waitemata	21,951	↓	↓	↑
Auckland	17,902	↓	↓	↑
Counties-Manukau	19,885	↓	↓	↑
Waikato	20,471	↓	↓	↑
Lakes District	5072	↓	↓	↑
Bay of Plenty	11,022	↓	↓	↑
Tairāwhiti	2293	↓	↓	↑
Taranaki	6865	↓	↓	↑
Hawkes Bay	8706	↓	↓	↑
Wanganui	3330	↓	↓	↑
Mid-Central	8978	↓	↓	↑
Hutt Valley	8337	↓	↓	↑
Capital-Coast	13,475	↓	↓	↑
Wairarapa	3241	↓	↓	↑
Nelson-Marlborough	8604	↓	↓	↑
West Coast	1775	↓	↓	↑
Canterbury	24,520	↓	↓	↑
South Canterbury	3740	↓	↓	↑
Otago	11,041	↓	↓	↑
Southland	5035	↓	↓	↑

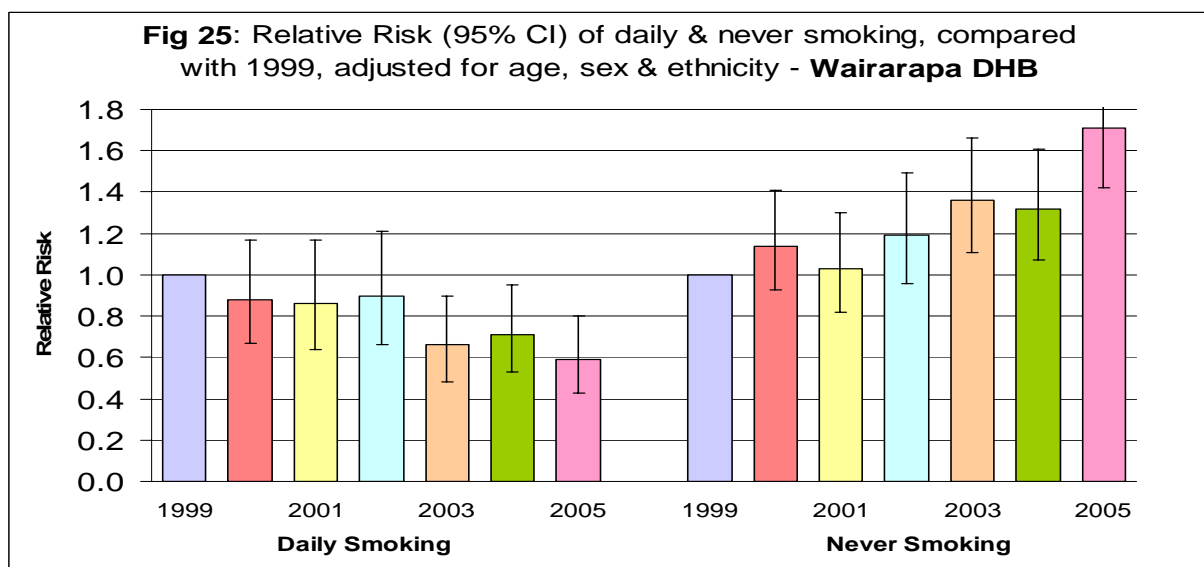
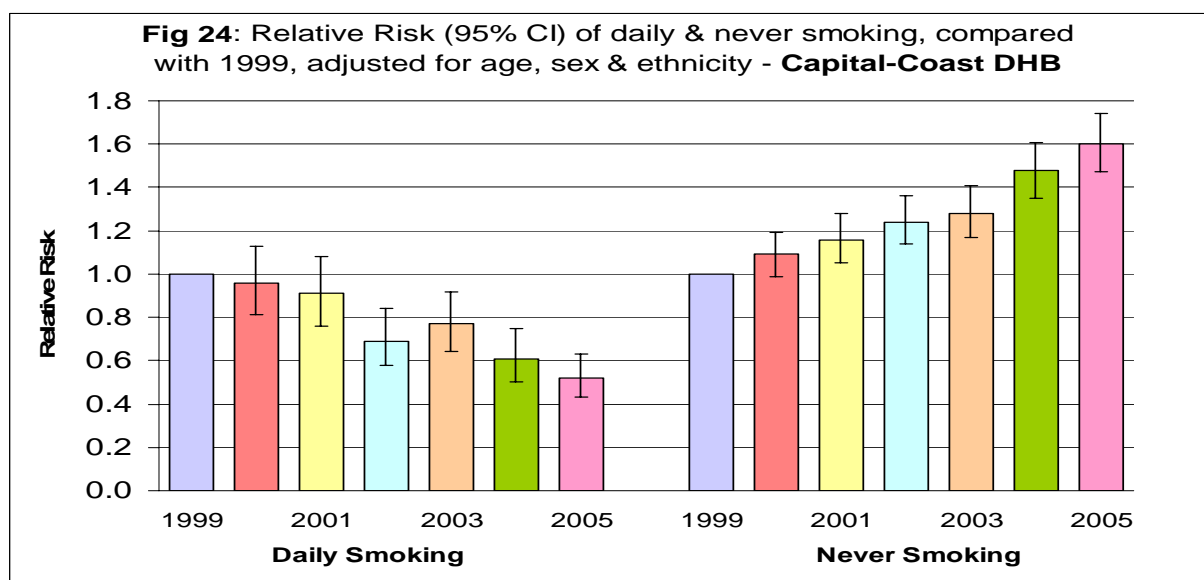
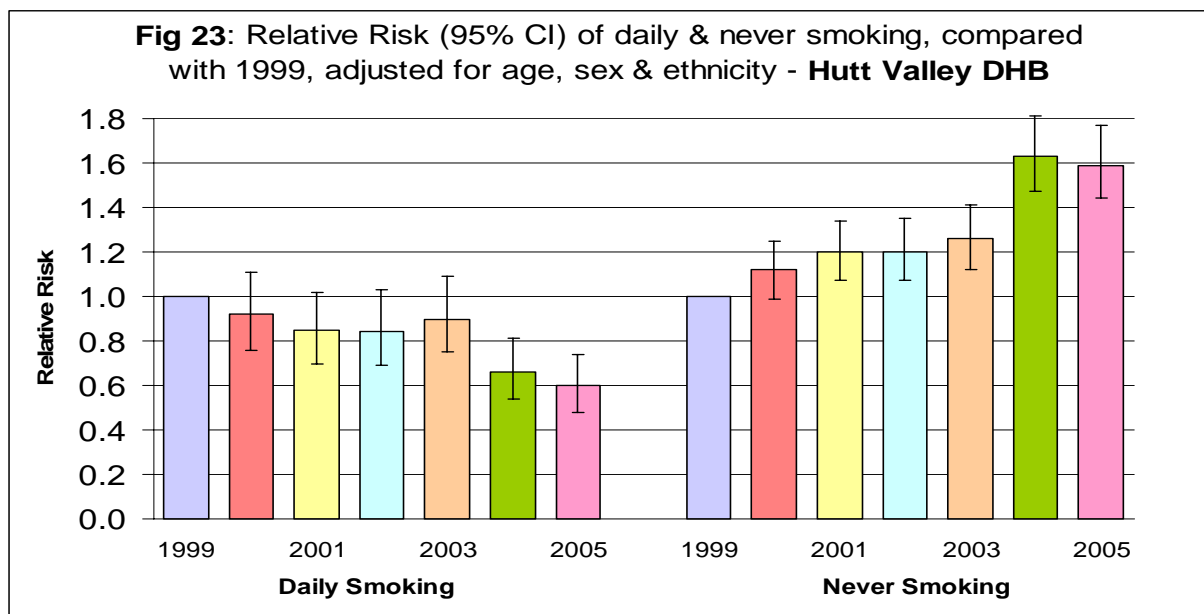
From 1999 to 2005: ↓ = decrease; ↑ = increase.

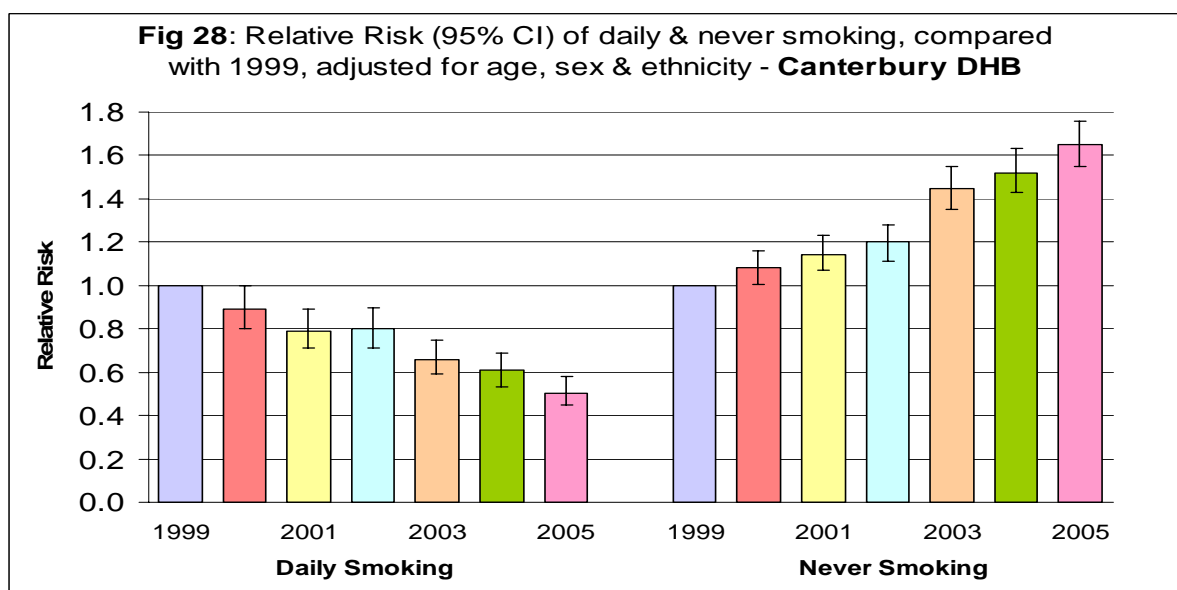
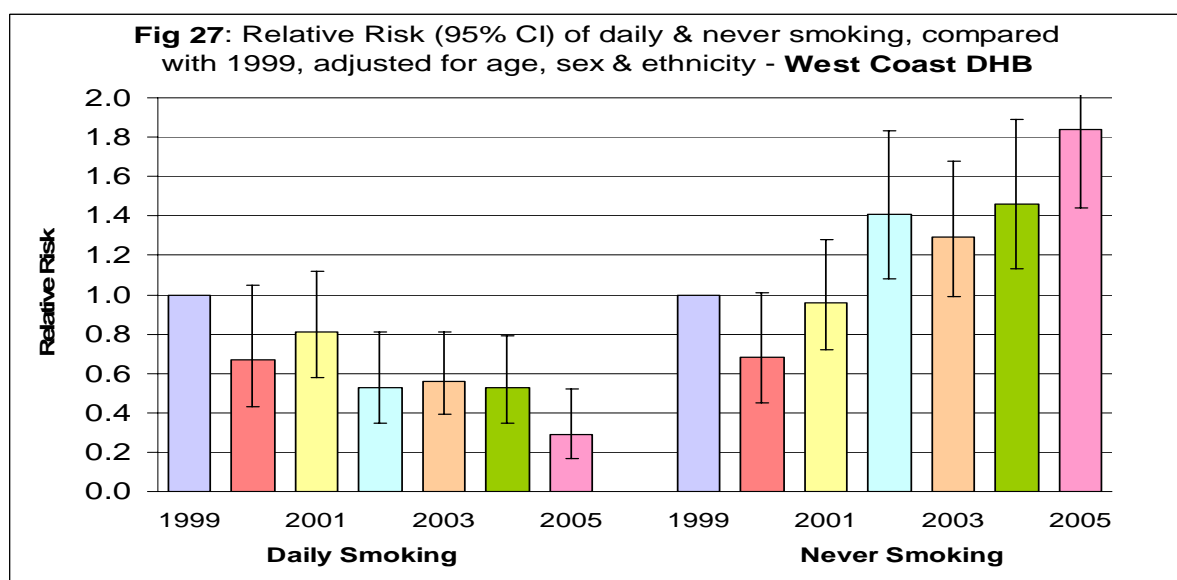
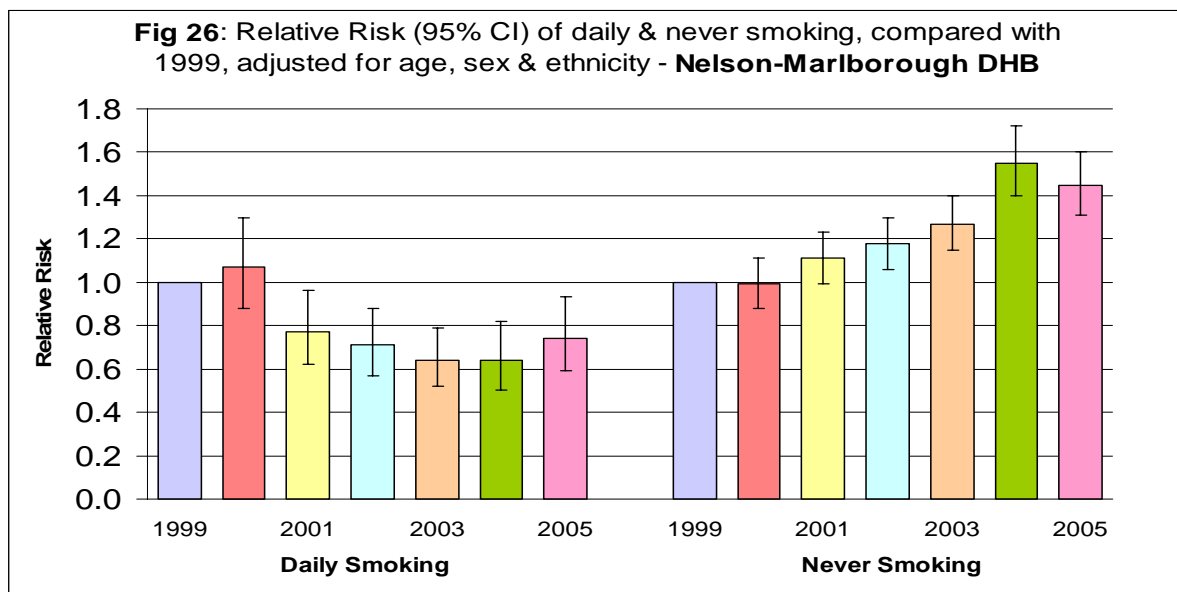












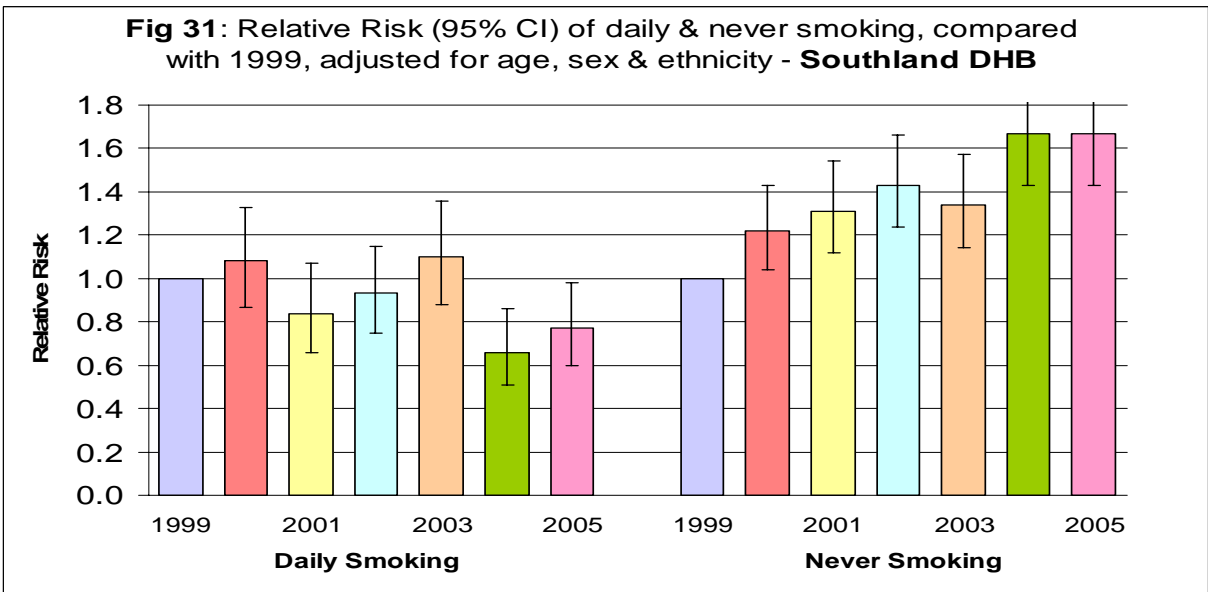
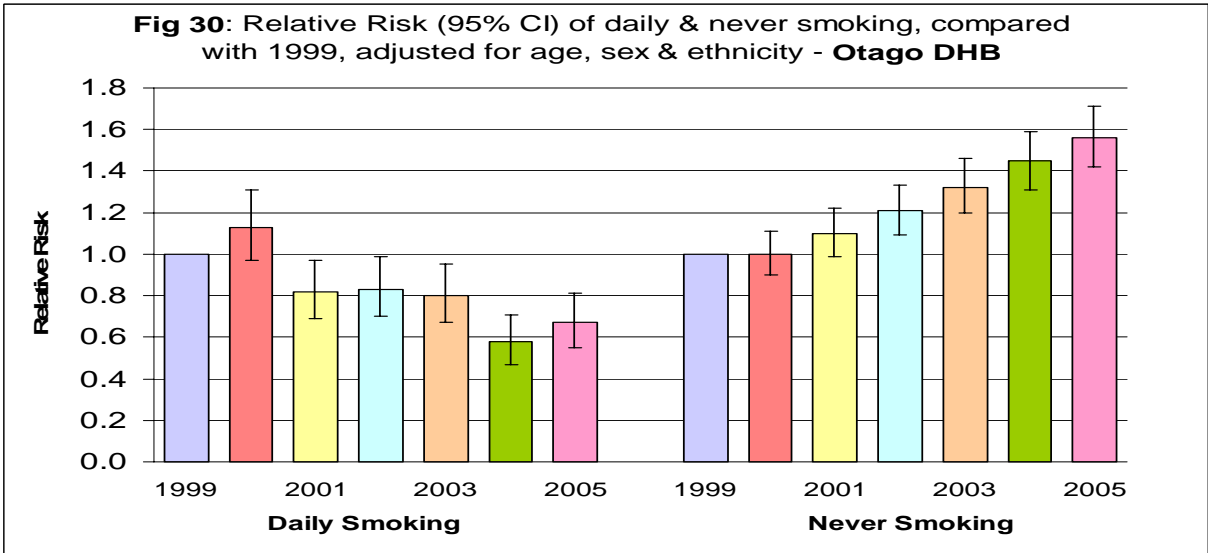
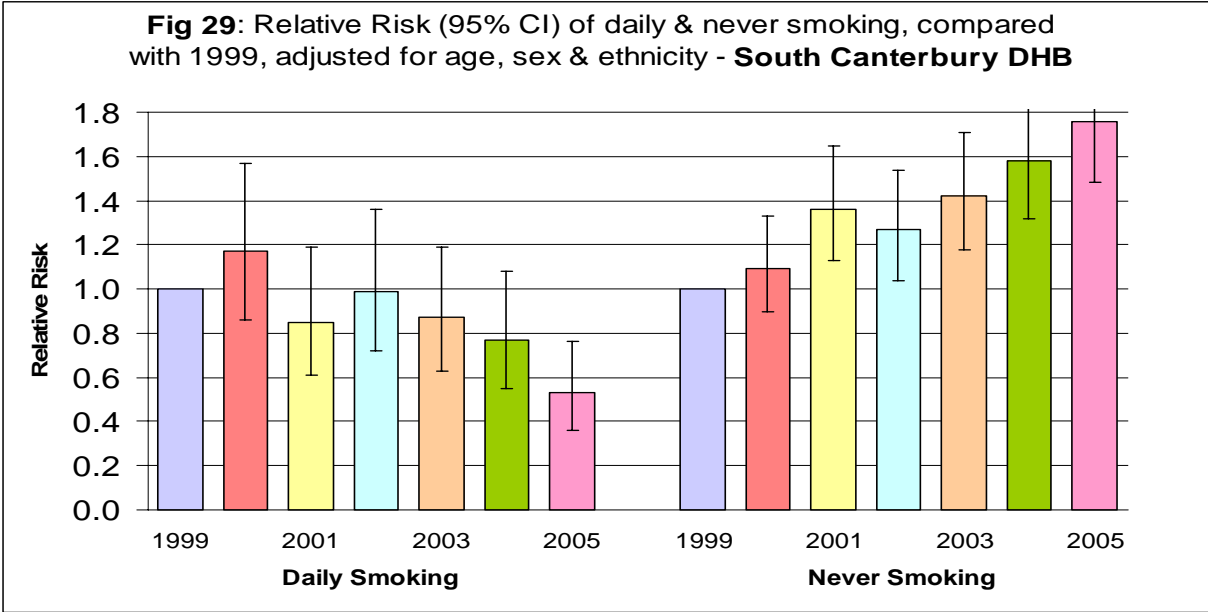


Table 14: Trends in proportion of Year 10 students (male & female) with parents who smoke and who live in a home with smoking inside, during 2001-2005, by *ethnicity*.

Smoking Variable	2001	2002	2003	2004	2005
	%	%	%	%	%
<i>All ethnicities</i> [#]					
Parental smoker	40.3	39.4*	40.6	41.0	39.8
Smoking in home	30.5	27.1***	29.9	27.1***	26.5***
<i>Maori</i>					
Parental smoker	66.0	64.8	64.3	64.1	65.2
Smoking in home	47.4	44.2**	47.9	39.6***	41.8***
<i>Pacific</i>					
Parental smoker	50.0	45.6**	47.0	49.5	49.0
Smoking in home	34.6	27.5***	34.3	25.4***	28.6***
<i>Asian</i>					
Parental smoker	29.9	29.2	31.8	30.2	29.2
Smoking in home	20.0	19.8	20.2	20.2	19.0
<i>European/Other</i>					
Parental smoker	34.1	33.8	34.9	34.9	33.8
Smoking in home	27.1	23.9***	26.1*	24.6***	23.4***

* p<0.05, ** p<0.01, *** p<0.001, compared with 2001, adjusted for age & sex

p-value also adjusted for ethnicity

Table 15: Trends in proportion of Year 10 students (male & female) with parents who smoke and who live in a home with smoking inside, during 2001-2005, by *school SES decile*.

Smoking Variable	2001	2002	2003	2004	2005
	%	%	%	%	%
<i>SES 1-2 (low)</i>					
Parental smoker	59.4	58.5	57.4	60.1	56.7
Smoking in home	42.1	41.4	43.8	34.4***	36.6***
<i>SES 3-4</i>					
Parental smoker	50.8	47.7	50.5	49.9	50.2
Smoking in home	37.8	33.2***	38.8	32.5***	33.5***
<i>SES 5-6</i>					
Parental smoker	43.7	43.3	44.2	44.8	44.2
Smoking in home	34.7	31.8***	33.3	29.9***	30.4***
<i>SES 7-8</i>					
Parental smoker	36.3	35.4	38.6*	38.2	36.5
Smoking in home	27.8	24.2***	27.9	26.5	24.8***
<i>SES 9-10</i>					
Parental smoker	27.4	26.7	27.0	26.2	27.4
Smoking in home	20.6	16.6***	18.4***	18.4***	17.4***

* $p < 0.05$, ** $p < 0.01$, *** $p < 0.001$, compared with 2001, adjusted for age, sex and ethnicity

Table 16a: Trends in proportion of Year 10 students (male & female) with parents who smoke and who live in a home with smoking inside, during 2001-2005, by 2004 district health board (DHB).

Smoking Variable	2001	2002	2003	2004	2005
	%	%	%	%	%
Northland DHB					
Parental smoker	47.5	45.0	49.2	53.0	51.2
Smoking in home	36.5	33.7	37.6	33.9	35.7
Waitemata DHB					
Parental smoker	36.8	37.8	36.2	38.1	34.6
Smoking in home	27.4	24.8*	26.6	25.1	21.3***
Auckland DHB					
Parental smoker	37.0	33.3*	33.2*	31.2***	30.3***
Smoking in home	28.1	20.7***	23.7***	19.4***	20.9***
Counties-Manukau DHB					
Parental smoker	41.7	42.0	38.4	40.7	41.1
Smoking in home	29.8	28.6	27.6	24.9***	26.0**
Waikato DHB					
Parental smoker	43.2	42.3	41.4	42.3	42.0
Smoking in home	33.2	28.9**	30.8	27.8***	28.0***

* p<0.05, ** p<0.01, *** p<0.001, compared with 2001, adjusted for age, sex and ethnicity

Table 16b: Trends in proportion of Year 10 students (male & female) with parents who smoke and who live in a home with smoking inside, during 2001-2005, by 2004 district health board (DHB).

Smoking Variable	2001	2002	2003	2004	2005
	%	%	%	%	%
Lakes District DHB					
Parental smoker	51.9	50.2	50.7	46.7**	48.6
Smoking in home	37.3	35.7	33.6	30.6**	30.5**
Bay of Plenty DHB					
Parental smoker	42.7	45.6	45.8	44.9	43.7
Smoking in home	29.2	29.8	31.8	32.1	29.4
Tairāwhiti DHB					
Parental smoker	57.7	53.7	56.3	54.3	54.2
Smoking in home	40.3	41.4	39.9	30.2**	28.6***
Taranaki DHB					
Parental smoker	43.7	37.2*	44.2	43.6	39.4
Smoking in home	39.0	29.4***	34.7*	32.0***	32.9**
Hawkes Bay DHB					
Parental smoker	50.5	45.6	50.0	47.3	50.1
Smoking in home	36.0	31.7	38.8	32.3*	34.2

* p<0.05, ** p<0.01, *** p<0.001, compared with 2001, adjusted for age, sex and ethnicity

Table 16c: Trends in proportion of Year 10 students (male & female) with parents who smoke and who live in a home with smoking inside, during 2001-2005, by 2004 district health board (DHB).

Smoking Variable	2001	2002	2003	2004	2005
	%	%	%	%	%
Wanganui DHB					
Parental smoker	37.5	47.1*	46.1*	51.5*	39.7
Smoking in home	30.2	36.4	38.2*	34.0	32.3
Mid-Central DHB					
Parental smoker	45.7	41.7*	44.7	41.8	45.9
Smoking in home	33.7	27.6**	33.4	28.0**	31.7
Hutt Valley DHB					
Parental smoker	38.6	41.8	45.3**	39.9	39.1
Smoking in home	27.4	27.4	32.6*	26.1	24.6
Capital-Coast DHB					
Parental smoker	36.0	33.5	39.6	37.0	34.5
Smoking in home	28.5	22.9***	28.2	25.2**	21.3***
Wairarapa DHB					
Parental smoker	48.6	37.4**	46.1	46.9	43.4
Smoking in home	41.7	30.5**	36.6	31.9**	28.6***

* p<0.05, ** p<0.01, *** p<0.001, compared with 2001, adjusted for age, sex and ethnicity

Table 16d: Trends in proportion of Year 10 students (male & female) with parents who smoke and who live in a home with smoking inside, during 2001-2005, by 2004 district health board (DHB).

Smoking Variable	2001	2002	2003	2004	2005
	%	%	%	%	%
Nelson-Marlborough DHB					
Parental smoker	35.0	35.4	37.4	35.4	37.6
Smoking in home	26.2	22.9	26.0	20.8**	22.8*
West Coast DHB					
Parental smoker	50.3	40.3*	51.2	48.7	43.3
Smoking in home	41.9	36.7	43.1	31.1**	33.9
Canterbury DHB					
Parental smoker	33.4	33.6	36.7	28.3**	36.5*
Smoking in home	24.4	22.6*	25.9	25.3	22.8*
South Canterbury DHB					
Parental smoker	38.0	37.4	39.6	42.4	36.8
Smoking in home	33.4	26.6*	31.3	29.0	29.5
Otago DHB					
Parental smoker	34.6	35.6	39.7**	40.2**	39.9**
Smoking in home	29.0	25.9*	29.9	27.1	29.0

* p<0.05, ** p<0.01, *** p<0.001, compared with 2001, adjusted for age, sex and ethnicity

Table 16e: Trends in proportion of Year 10 students (male & female) with parents who smoke and who live in a home with smoking inside, during 2001-2005, by 2004 district health board (DHB).

Smoking Variable	2001	2002	2003	2004	2005
	%	%	%	%	%
Southland DHB					
Parental smoker	44.3	42.8	46.5	45.2	46.1
Smoking in home	42.8	37.5*	39.7	34.6**	38.3

* $p < 0.05$, ** $p < 0.01$, *** $p < 0.001$, compared with 2001, adjusted for age, sex and ethnicity

Table 17: Summary of trends in proportion of Year 10 students (male & female) with parents who smoke and who live in a home with smoking inside, during 2001-2005, by 2004 district health board (DHB).

District Health Board	N 2001-2005	Parental Smoking	Smoking in Home
Northland	5938	↔	↔
Waitemata	15,907	↔	↓
Auckland	12,643	↓	↓
Counties-Manukau	15,007	↔	↓
Waikato	14,901	↔	↓
Lakes District	3618	↔	↓
Bay of Plenty	8554	↔	↔
Tairāwhiti	1722	↔	↓
Taranaki	5022	↔	↓
Hawkes Bay	6042	↔	↔
Wanganui	2287	↔	↔
Mid-Central	6342	↔	↔
Hutt Valley	6102	↔	↔
Capital-Coast	10,276	↔	↓
Wairarapa	2358	↔	↓
Nelson-Marlborough	6223	↔	↓
West Coast	1357	↔	↓
Canterbury	18,134	↔	↔
South Canterbury	2761	↔	↔
Otago	7689	↑	↔
Southland	3409	↔	↔

From 2001 to 2005: ↔ = no change; ↓ = decrease; ↑ = increase.